

# STARWOOD

ASPEN, COLORADO

BEING PARTS OF  
 LOT'S, 3-6-7-9-10-14-15 & 16, SECTION 26; TOWNSHIP, 9 SOUTH, RANGE, 85 WEST,  
 OF THE 6TH. P.M.  
 SCALE • 200'

### APPROVALS.

THE FOREGOING PLAT IS ACCEPTED FOR FILING AND CONVEYANCE OF THE ROADS THEREIN  
 ACCEPTED BY THE BOARD OF PITKIN COUNTY COMMISSIONERS THIS 3RD DAY OF DECEMBER 1962,  
 SUBJECT TO THE PROVISION THAT COUNTY SHALL NOT UNDERTAKE THE MAINTENANCE, OF SUCH ROADS  
 UNTIL SATISFACTORY CONSTRUCTION THEREOF BY THE SUB-DIVIDER,

*J. J. Gandy*  
 CHAIRMAN

ACCEPTED FOR FILING IN THE OFFICE OF PITKIN COUNTY CLERK AND RECORDER, THIS 7TH. DAY,  
 OF DECEMBER, 1962. PLAT BOOK NO. 2 PAGE 282

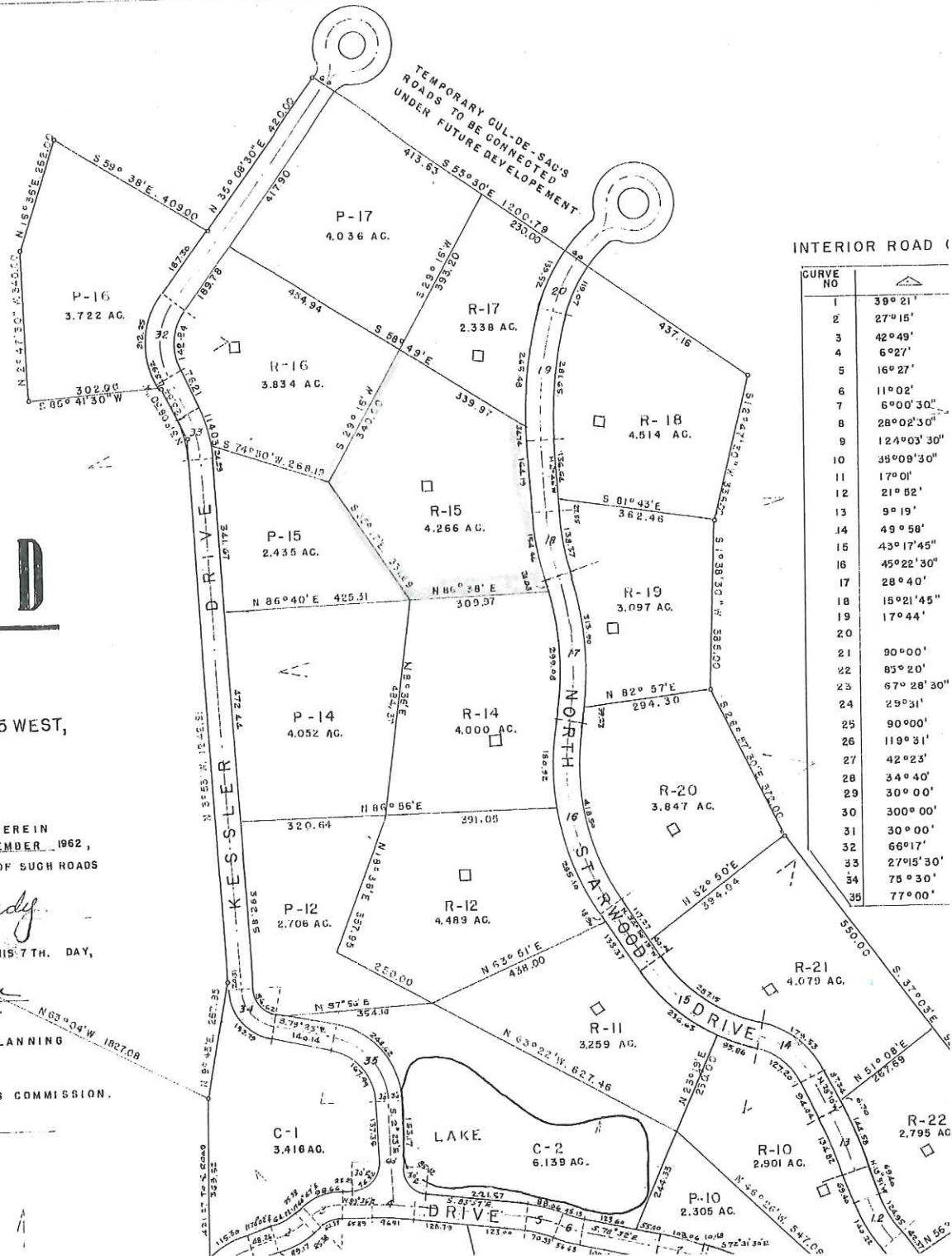
*Marie Mason*  
 dep. CLERK AND RECORDER.

THIS MAP OF STARWOOD WAS APPROVED BY RESOLUTION OF PITKIN COUNTY PLANNING  
 AND ZONING COMMISSION THE 14TH. DAY OF NOVEMBER, 1962.

PITKIN COUNTY PLANNING AND ZONING COMMISSION.

*Fred W. Heilman*  
 CHAIRMAN.

GENERAL NOTES,  
 UTILITY EASEMENTS ARE TO BE ALONG EACH LOT LINE 5.0' IN WIDTH ON  
 EACH SIDE OF LOT LINE.  
 □ DESIGNATES BUILDING SITES.



### INTERIOR ROAD (

CURVE NO	ANGLE
1	39° 21'
2	27° 15'
3	42° 49'
4	6° 27'
5	16° 27'
6	11° 02'
7	6° 00' 30"
8	26° 02' 30"
9	124° 03' 30"
10	38° 08' 30"
11	17° 01'
12	21° 52'
13	9° 19'
14	49° 58'
15	43° 17' 45"
16	45° 22' 30"
17	28° 40'
18	15° 21' 45"
19	17° 44'
20	
21	90° 00'
22	83° 20'
23	67° 28' 30"
24	25° 31'
25	90° 00'
26	119° 31'
27	42° 23'
28	34° 40'
29	30° 00'
30	300° 00'
31	30° 00'
32	66° 17'
33	27° 15' 30"
34	75° 30'
35	77° 00'