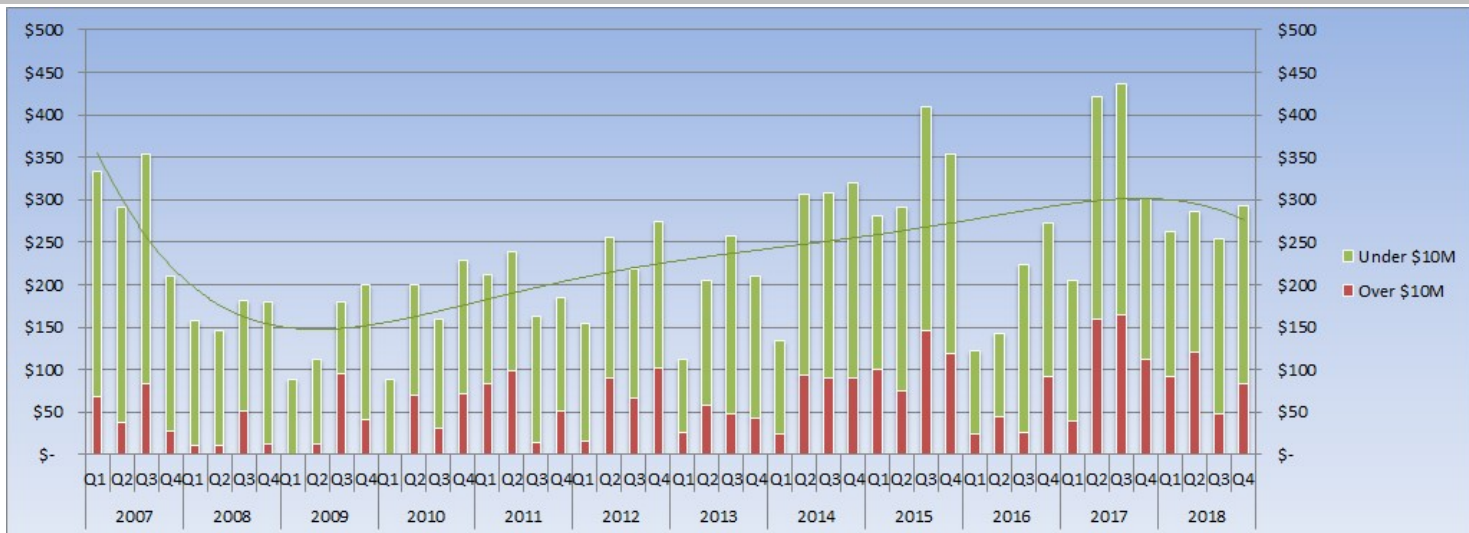




Aspen: Dollar Sales by Quarter - All Property Types Combined



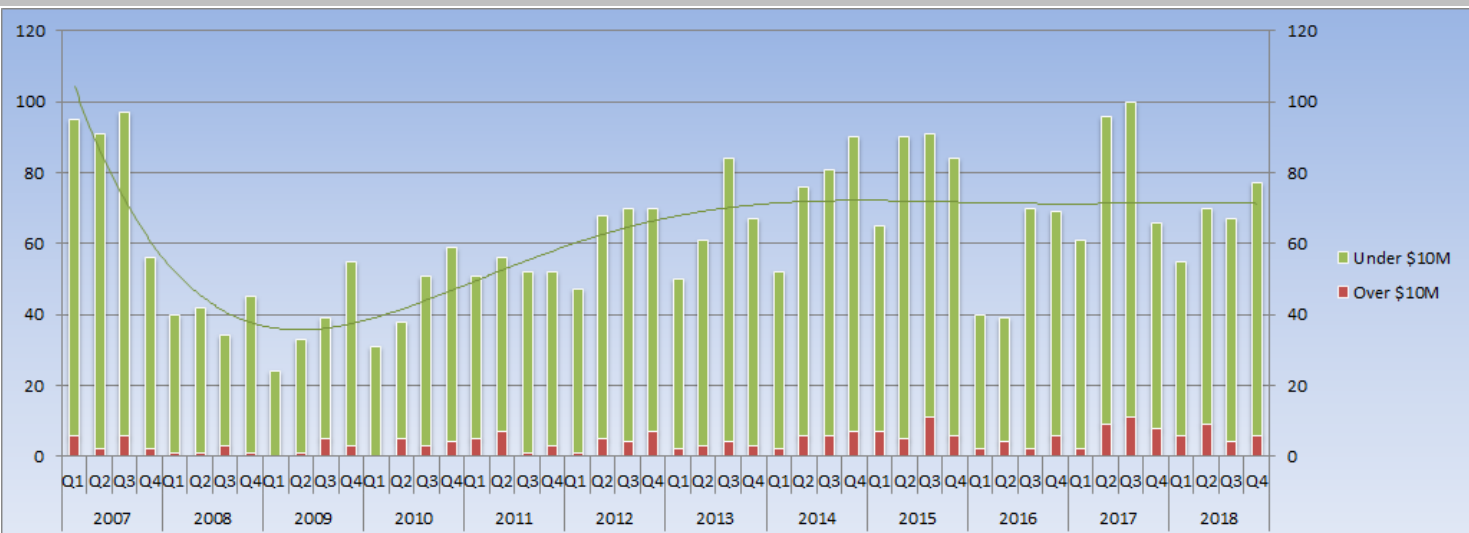
*The trend line indicates the general pattern and direction of the Dollar Volume over this 11 year period.

© Estin Report: Q4 2018 www.EstinAspen.com

Type	Desc	2007				2008				2009				2010				2011				2012				2013				2014				2015				2016				2017				2018					
		Q1	Q2	Q3	Q4	Q1	Q2	Q3	Q4	Q1	Q2	Q3	Q4	Q1	Q2	Q3	Q4	Q1	Q2	Q3	Q4	Q1	Q2	Q3	Q4	Q1	Q2	Q3	Q4	Q1	Q2	Q3	Q4	Q1	Q2	Q3	Q4	Q1	Q2	Q3	Q4										
Single Family Homes	\$10M & Over	55.8	38	70	27	11.4	10	52	13	0	12	95	42	0	60.3	31	59	83	98	14	51.8	16	91	67	101	26	59	47	42	25	65	90	59	87	65	146	93	0	45	25.9	61	39	115	154	101	64	94	36	57		
	Total \$ Vol.	159	186	208	134	107	89	149	77	48.3	72	136	132	47	161	107	143	155	169	104	121	82	187	152	202	67	138	144	132	82	188	220	189	154	168	307	229	58	60	127	167	100	272	266	200	138	166	161	127		
Condos	\$10M & Over	0	0	0	0	0	0	0	0	0	0	0	0	0	10	0	0	0	0	0	0	0	0	0	0	0	0	0	0	0	28	0	32	13	0	25	15	0	0	0	0	0	0	0	0	11	12	28	11	11	13
	Total \$ Vol.	84.7	87	101	56	48.6	41	32	97	34.2	33	37	53	37	37.8	37	56	50.7	61	50	57.7	53	40	57	51	30	61	92	67	49	101	75	109	96	88	78	105	51	67	87.5	63	66	92	152	82	112	89	64	109		
Vacant Land	\$10M & Over	13	0	13	0	0	0	0	0	0	0	0	0	0	0	0	13	0	0	0	0	0	0	0	0	0	0	0	0	0	0	0	10	0	0	0	10	0	0	0	32	0	44	0	0	0	15	0	15		
	Total \$ Vol.	88.8	18	44	20	2.33	16	0	5.4	6.06	7	6.5	15	4.5	0	16	29	4.88	8.8	8.5	6.15	19	29	10	21	15	5	22	11	4	17	13	22	31	34	24	20	14	16	9.61	42	39	58	19	20	12	31	29	57		
Annual \$10M & Over / % Chg:		\$216 / 0%				\$86 / -60%				\$149 / 74%				\$174 / 16%				\$247 / 42%				\$275 / 12%				\$174 / -37%				\$298 / 71%				\$440 / 48%				\$188 / -57%				\$475 / -51%				\$344 / -28%					
Annual \$ Volume / % Chg:		\$1187 / 0%				\$664 / -44%				\$580 / -13%				\$676 / 17%				\$797 / 18%				\$903 / 13%				\$784 / -13%				\$1069 / 36%				\$1336 / 25%				\$761 / -43%				\$1365 / 79%				\$1095 / -20%					

© Estin Report: Q4 2018 www.EstinAspen.com

Aspen: Unit Sales by Quarter - All Property Types Combined



*The trend line indicates the general pattern and direction of unit sales over this time period.

© Estin Report: Q4 2018 www.EstinAspen.com

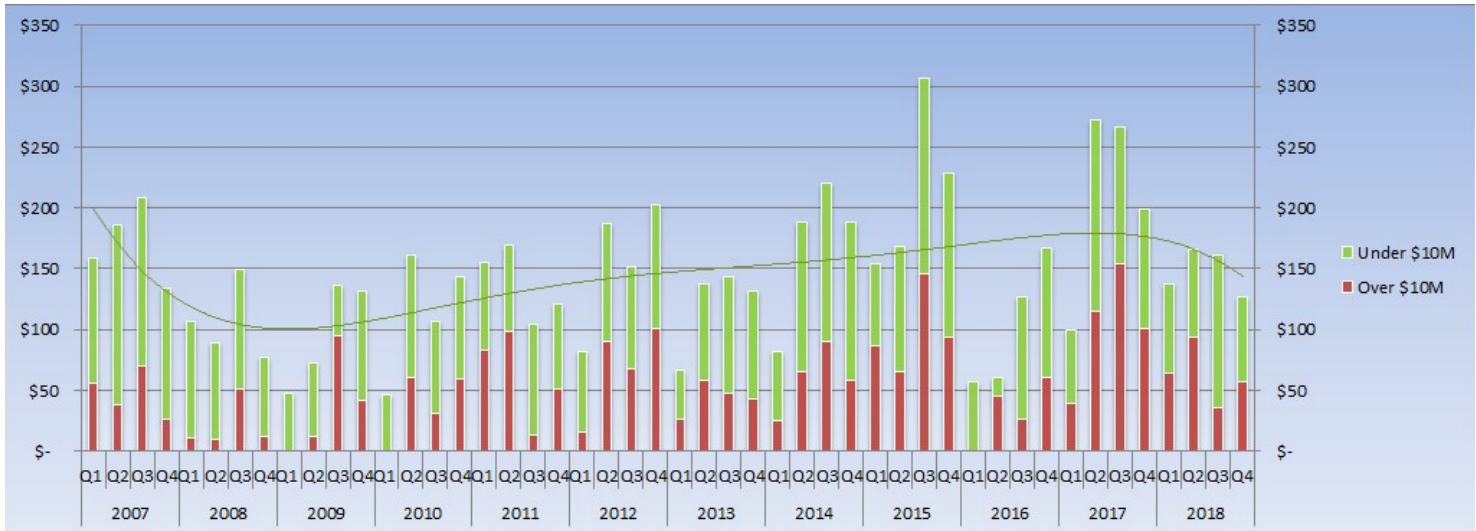
Property types include: single family homes, condos and vacant land/lots. Fractionals are not included.

Type	Desc	2007				2008				2009				2010				2011				2012				2013				2014				2015				2016				2017				2018							
		Q1	Q2	Q3	Q4	Q1	Q2	Q3	Q4	Q1	Q2	Q3	Q4	Q1	Q2	Q3	Q4	Q1	Q2	Q3	Q4	Q1	Q2	Q3	Q4	Q1	Q2	Q3	Q4	Q1	Q2	Q3	Q4	Q1	Q2	Q3	Q4	Q1	Q2	Q3	Q4												
Single Family Homes	\$10M & Over	5	2	5	2	1	1	3	1	0	1	5	3	0	4	3	3	5	7	1	3	1	5	4	7	2	3	4	3	2	4	6	5	6	4	11	5	0	4	2	4	2	7	10	7	4	7	3	4				
	Total Sales	26	37	33	21	18	15	20	11	9	13	15	21	13	23	23	23	20	23	22	20	17	28	26	29	17	22	29	27	20	31	33	33	22	27	40	30	11	8	22	29	17	37	30	28	19	26	27	23				
Condos	\$10M & Over	0	0	0	0	0	0	0	0	0	0	0	0	0	1	0	0	0	0	0	0	0	0	0	0	0	0	0	0	0	2	0	2	1	0	1	1	0	0	0	0	0	0	0	0	0	1	1	1	1	1	1	1
	Total Sales	43	49	57	31	20	22	14	30	13	17	22	27	17	15	25	29	26	27	26	29	25	28	40	32	26	36	47	36	29	38	42	47	35	54	43	47	27	25	44	33	30	45	60	32	30	36	29	44				
Vacant Land	\$10M & Over	1	0	1	0	0	0	0	0	0	0	0	0	0	0	0	0	1	0	0	0	0	0	0	0	0	0	0	0	0	0	0	0	0	1	0	0	1	0	0	1	0	0	2	0	2	0	0	0	0	1	0	1
	Total Sales	26	5	7	4	2	5	0	4	2	3	2	7	1	0	6	7	2	6	4	3	5	12	4	9	7	3	8	4	3	7	6	10	8	9	8	7	2	6	4	7	14	14	10	6	6	8	11	10				
Annual \$10M & Over / % Chg:		16 / 0%				6 / -63%				9 / 50%				12 / 33%				16 / 33%				17 / 6%				12 / -29%				21 / 75%				29 / 38%				14 / -52%				30 / 114%				25 / -17%							
Annual Unit Sales / % Chg:		339 / 0%				161 / -53%				151 / -6%				179 / 19%				211 / 18%				255 / 21%				262 / 3%				299 / 14%				330 / 10%				218 / -34%				323 / 48%				269 / -17%							

© Estin Report: Q4 2018 www.EstinAspen.com



Aspen: Dollar Sales by Quarter - Single Family Homes (SFH)



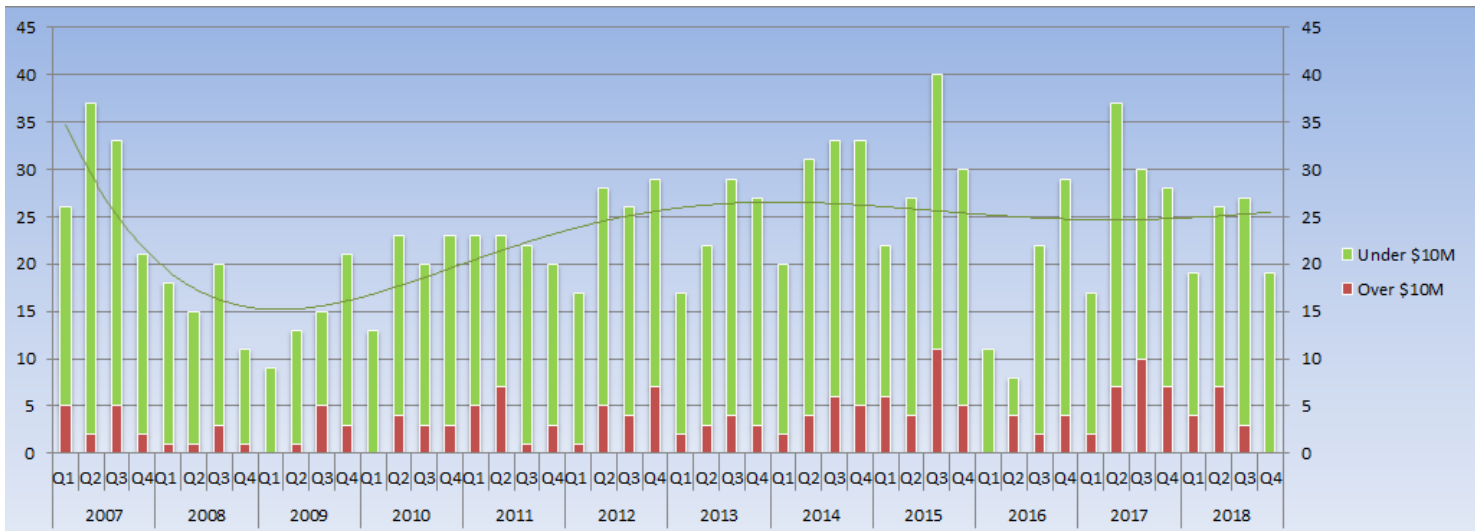
*The trend line indicates the general pattern and direction of the Dollar Volume over this 11 year period.

© Estin Report: Q4 2018 www.EstinAspen.com

Type	Desc	2007				2008				2009				2010				2011				2012				2013				2014				2015				2016				2017				2018			
		Q1	Q2	Q3	Q4	Q1	Q2	Q3	Q4	Q1	Q2	Q3	Q4	Q1	Q2	Q3	Q4	Q1	Q2	Q3	Q4	Q1	Q2	Q3	Q4	Q1	Q2	Q3	Q4	Q1	Q2	Q3	Q4	Q1	Q2	Q3	Q4	Q1	Q2	Q3	Q4								
Single Family Homes	\$10M & Over	55.8	38	70	27	11.4	10	52	13	0	12	95	42	0	60.3	31	59	83	98	14	51.8	16	91	67	101	26	59	47	42	25	65	90	59	87	65	146	93	0	45	25.9	61	39	115	154	101	64	94	36	57
	Total \$ Vol.	159	186	208	134	107	89	149	77	48.3	72	136	132	47	161	107	143	155	169	104	121	82	187	152	202	67	138	144	132	82	188	220	189	154	168	307	229	58	60	127	167	100	272	266	200	138	166	161	127
Annual \$10M & Over / % Chg:		\$191 / 0%				\$86 / -55%				\$149 / 74%				\$151 / 1%				\$247 / 64%				\$275 / 12%				\$174 / -37%				\$239 / 37%				\$392 / 64%				\$131 / -66%				\$409 / 211%				\$251 / -39%			
Annual \$ Volume / % Chg:		\$687 / 0%				\$422 / -39%				\$388 / -8%				\$459 / 18%				\$549 / 20%				\$624 / 13%				\$481 / -23%				\$679 / 41%				\$859 / 26%				\$411 / -52%				\$838 / 104%				\$592 / -29%			

© Estin Report: Q4 2018 www.EstinAspen.com

Aspen: Unit Sales by Quarter - Single Family Homes (SFH)



*The trend line indicates the general pattern and direction of the unit sales over this 11 year period.

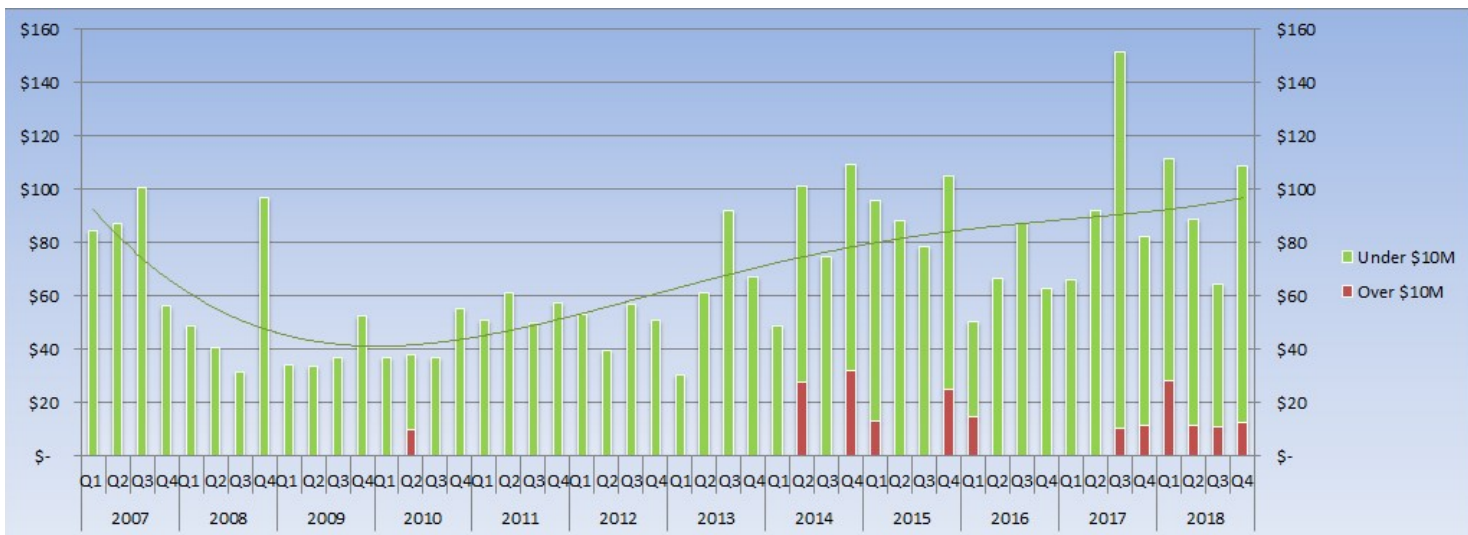
© Estin Report: Q4 2018 www.EstinAspen.com

Type	Desc	2007				2008				2009				2010				2011				2012				2013				2014				2015				2016				2017				2018			
		Q1	Q2	Q3	Q4	Q1	Q2	Q3	Q4	Q1	Q2	Q3	Q4	Q1	Q2	Q3	Q4	Q1	Q2	Q3	Q4	Q1	Q2	Q3	Q4	Q1	Q2	Q3	Q4	Q1	Q2	Q3	Q4	Q1	Q2	Q3	Q4	Q1	Q2	Q3	Q4								
Single Family Homes	\$10M & Over	5	2	5	2	1	1	3	1	0	1	5	3	0	4	3	3	5	7	1	3	1	5	4	7	2	3	4	3	2	4	6	5	6	4	11	5	0	4	2	4	2	7	10	7	4	7	3	4
	Total Sales	26	37	33	21	18	15	20	11	9	13	15	21	13	23	20	23	23	23	22	20	17	28	26	29	17	22	29	27	20	31	33	33	22	27	40	30	11	8	22	29	17	37	30	28	19	26	27	23
Annual \$10M & Over / % Chg:		14 / 0%				6 / -57%				9 / 50%				10 / 11%				16 / 60%				17 / 6%				12 / -29%				17 / 42%				26 / 53%				10 / -62%				26 / 160%				18 / -31%			
Annual Unit Sales / % Chg:		117 / 0%				64 / -45%				58 / -9%				79 / 36%				88 / 11%				100 / 14%				95 / -5%				117 / 23%				119 / 2%				70 / -41%				112 / 60%				95 / -15%			

© Estin Report: Q4 2018 www.EstinAspen.com



Aspen: Dollar Sales by Quarter - Condos



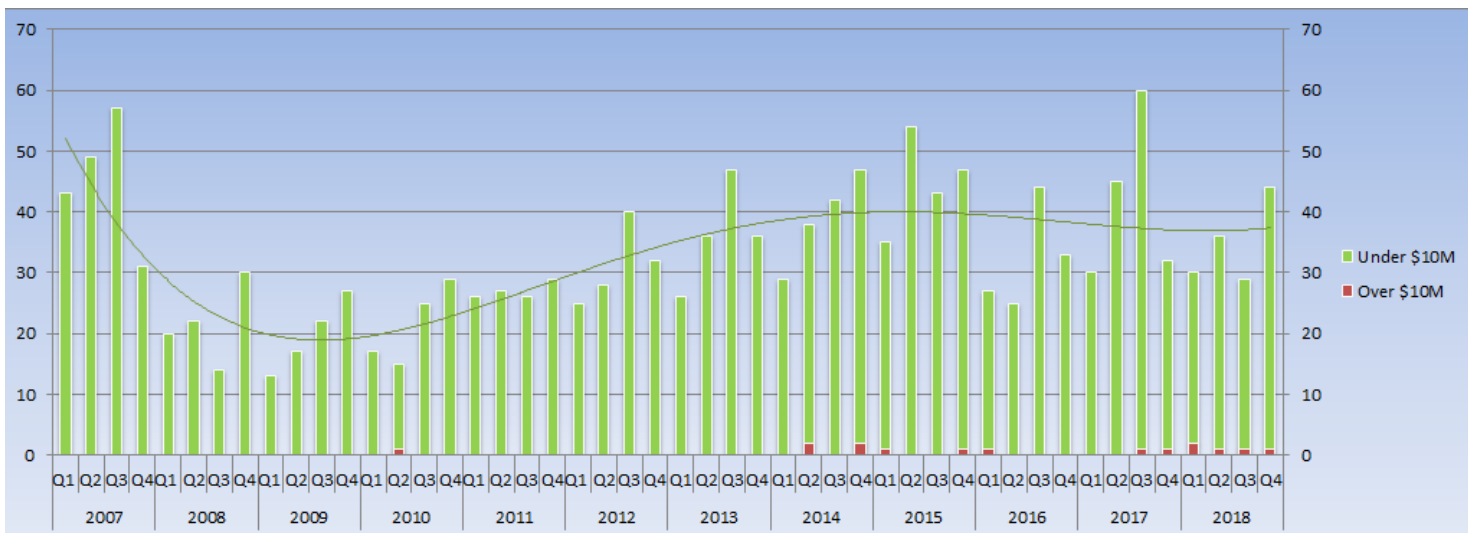
*The trend line indicates the general pattern and direction of the Dollar Volume over this 11 year period.

© Estin Report: Q4 2018 www.EstinAspen.com

Type	Desc	2007				2008				2009				2010				2011				2012				2013				2014				2015				2016				2017				2018			
		Q1	Q2	Q3	Q4	Q1	Q2	Q3	Q4	Q1	Q2	Q3	Q4	Q1	Q2	Q3	Q4	Q1	Q2	Q3	Q4	Q1	Q2	Q3	Q4	Q1	Q2	Q3	Q4	Q1	Q2	Q3	Q4	Q1	Q2	Q3	Q4	Q1	Q2	Q3	Q4								
Condos	\$10M & Over	0	0	0	0	0	0	0	0	0	0	0	0	0	0	0	0	0	0	0	0	0	0	0	0	0	0	0	0	0	28	0	32	13	0	0	25	15	0	0	0	0	0	0	0	0	0	11	12
	Total \$ Vol.	84.7	87	101	56	48.6	41	32	97	34.2	33	37	53	37	37.8	37	56	50.7	61	50	57.7	53	40	57	51	30	61	92	67	49	101	75	109	96	88	78	105	51	67	87.5	63	66	92	152	82				
Annual \$10M & Over / % Chg:		\$0 / 0%				\$0 / 0%				\$0 / 0%				\$10 / 0%				\$0 / -100%				\$0 / 0%				\$0 / 0%				\$60 / 0%				\$38 / -36%				\$15 / -61%				\$22 / 48%				\$63 / 184%			
Annual \$ Volume / % Chg:		\$329 / 0%				\$218 / -34%				\$157 / -28%				\$167 / 6%				\$219 / 31%				\$200 / -9%				\$251 / 25%				\$334 / 33%				\$367 / 10%				\$268 / -27%				\$392 / 47%				\$374 / -5%			

© Estin Report: Q4 2018 www.EstinAspen.com

Aspen: Unit Sales by Quarter - Condos



*The trend line indicates the general pattern and direction of the unit sales over this 11 year period.

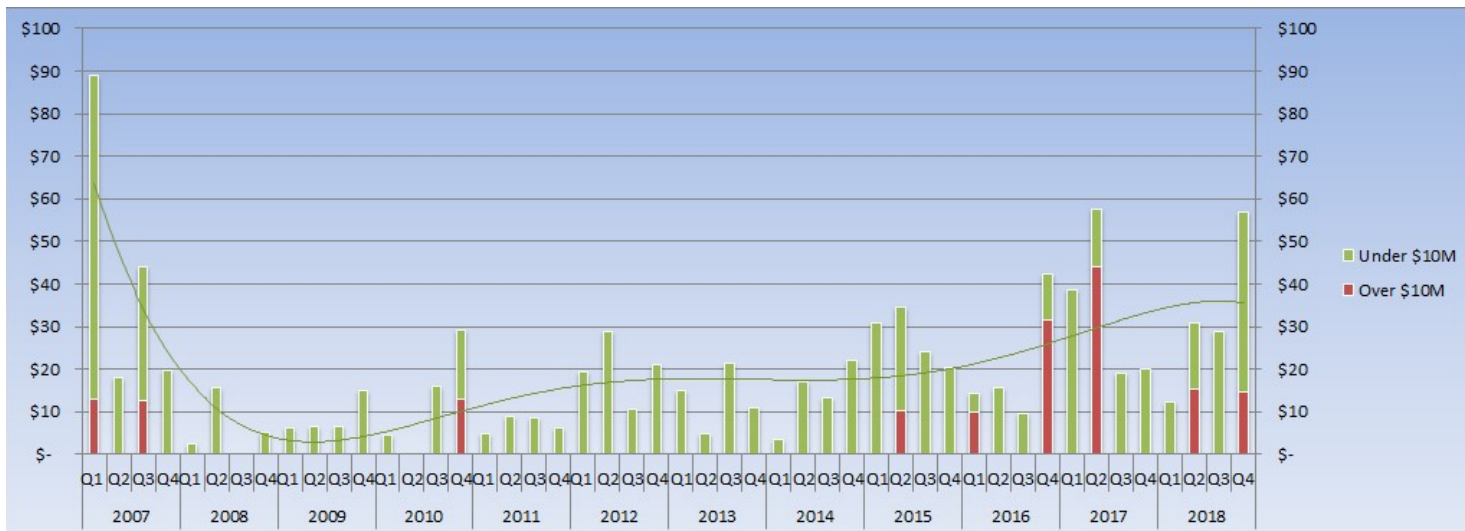
© Estin Report: Q4 2018 www.EstinAspen.com

Type	Desc	2007				2008				2009				2010				2011				2012				2013				2014				2015				2016				2017				2018			
		Q1	Q2	Q3	Q4	Q1	Q2	Q3	Q4	Q1	Q2	Q3	Q4	Q1	Q2	Q3	Q4	Q1	Q2	Q3	Q4	Q1	Q2	Q3	Q4	Q1	Q2	Q3	Q4	Q1	Q2	Q3	Q4	Q1	Q2	Q3	Q4	Q1	Q2	Q3	Q4								
Condos	\$10M & Over	0	0	0	0	0	0	0	0	0	0	0	0	0	1	0	0	0	0	0	0	0	0	0	0	0	0	0	0	0	2	0	2	1	0	0	1	1	0	0	0	0	0	1	1	2	1	1	1
	Total Sales	43	49	57	31	20	22	14	30	13	17	22	27	17	15	25	29	26	27	26	29	25	28	40	32	26	36	47	36	29	38	42	47	35	54	43	47	27	25	44	33	30	45	60	32				
Annual \$10M & Over / % Chg:		0 / 0%				0 / 0%				0 / 0%				1 / 0%				0 / -100%				0 / 0%				0 / 0%				4 / 0%				2 / -50%				1 / -50%				2 / 100%				5 / 150%			
Annual Unit Sales / % Chg:		180 / 0%				86 / -52%				79 / -8%				86 / 9%				108 / 26%				125 / 16%				145 / 16%				156 / 8%				179 / 15%				129 / -28%				167 / 29%				139 / -17%			

© Estin Report: Q4 2018 www.EstinAspen.com



Aspen: Dollar Sales by Quarter - Vacant Land/Lots



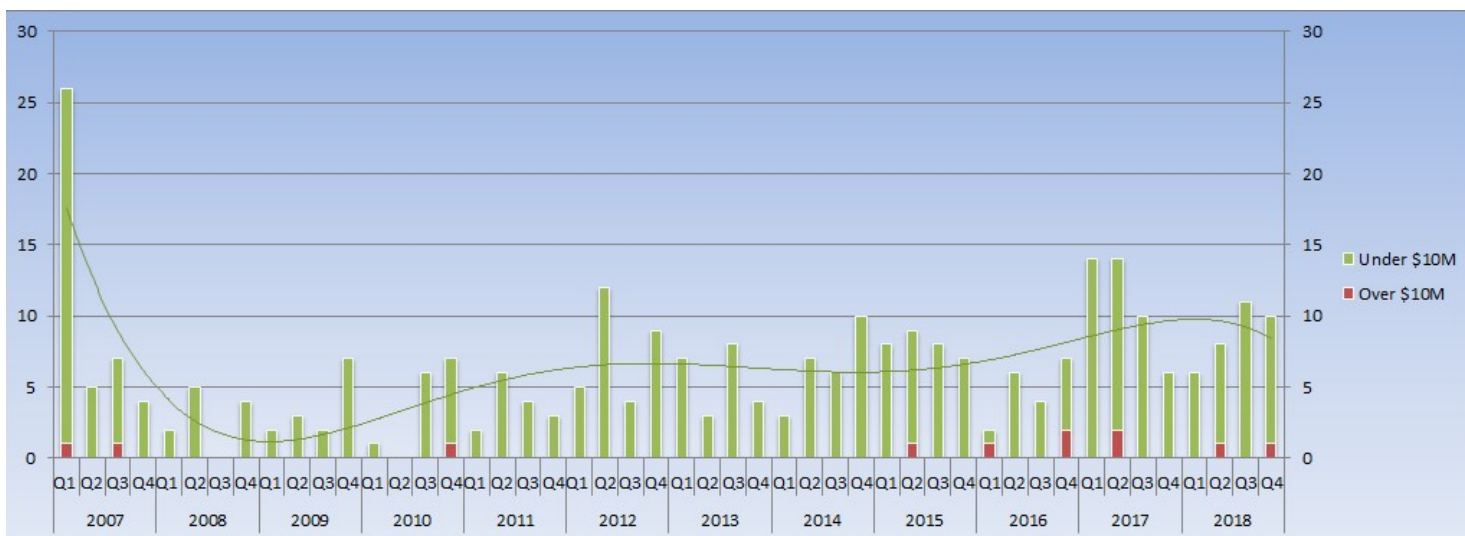
*The trend line indicates the general pattern and direction of the Dollar Volume over this 11 year period.

© Estin Report: Q4 2018 www.EstinAspen.com

Type	Desc	2007				2008				2009				2010				2011				2012				2013				2014				2015				2016				2017				2018			
		Q1	Q2	Q3	Q4	Q1	Q2	Q3	Q4	Q1	Q2	Q3	Q4	Q1	Q2	Q3	Q4	Q1	Q2	Q3	Q4	Q1	Q2	Q3	Q4	Q1	Q2	Q3	Q4	Q1	Q2	Q3	Q4	Q1	Q2	Q3	Q4	Q1	Q2	Q3	Q4								
Vacant Land	\$10M & Over	13	0	13	0	0	0	0	0	0	0	0	0	0	0	13	0	0	0	0	0	0	0	0	0	0	0	0	0	0	0	0	0	10	0	0	0	10	0	0	0	0	0	0	0	15	0	15	0
	Total \$ Vol.	88.8	18	44	20	2.33	16	0	5.4	6.06	7	6.5	15	4.5	0	16	29	4.88	8.8	8.5	6.15	19	29	10	21	15	4.8	22	11	4	17	13	22	31	34	24	20	10	16	9.61	42	39	58	19	20	12	31	29	57
Annual \$10M & Over / % Chg:		\$26 / 0%				\$0 / -100%				\$0 / 0%				\$13 / 0%				\$0 / -100%				\$0 / 0%				\$0 / 0%				\$0 / 0%				\$10 / 0%				\$42 / 311%				\$44 / 6%				\$30 / -32%			
Annual \$ Volume / % Chg:		\$170 / 0%				\$23 / -86%				\$34 / 47%				\$50 / 45%				\$28 / -43%				\$80 / 182%				\$52 / -34%				\$56 / 7%				\$110 / 96%				\$82 / -25%				\$135 / 65%				\$129 / -5%			

© Estin Report: Q4 2018 www.EstinAspen.com

Aspen: Unit Sales by Quarter - Vacant Land/Lots



*The trend line indicates the general pattern and direction of the unit sales over this 11 year period.

© Estin Report: Q4 2018 www.EstinAspen.com

Type	Desc	2007				2008				2009				2010				2011				2012				2013				2014				2015				2016				2017				2018			
		Q1	Q2	Q3	Q4	Q1	Q2	Q3	Q4	Q1	Q2	Q3	Q4	Q1	Q2	Q3	Q4	Q1	Q2	Q3	Q4	Q1	Q2	Q3	Q4	Q1	Q2	Q3	Q4	Q1	Q2	Q3	Q4	Q1	Q2	Q3	Q4	Q1	Q2	Q3	Q4								
Vacant Land	\$10M & Over	1	0	1	0	0	0	0	0	0	0	0	0	0	0	0	1	0	0	0	0	0	0	0	0	0	0	0	0	0	0	0	0	1	0	0	0	1	0	0	2	0	2	0	0	0	1	0	1
	Total Sales	26	5	7	4	2	5	0	4	2	3	2	7	1	0	6	7	2	6	4	3	5	12	4	9	7	3	8	4	3	7	6	10	8	9	8	7	2	6	4	7	14	14	10	6	6	8	11	10
Annual \$10M & Over / % Chg:		2 / 0%				0 / -100%				0 / 0%				1 / 0%				0 / -100%				0 / 0%				0 / 0%				0 / 0%				1 / 0%				3 / 200%				2 / -33%				2 / 0%			
Annual Unit Sales / % Chg:		42 / 0%				11 / -74%				14 / 27%				14 / 0%				15 / 7%				30 / 100%				22 / -27%				26 / 18%				32 / 23%				19 / -41%				44 / 132%				35 / -20%			

© Estin Report: Q4 2018 www.EstinAspen.com