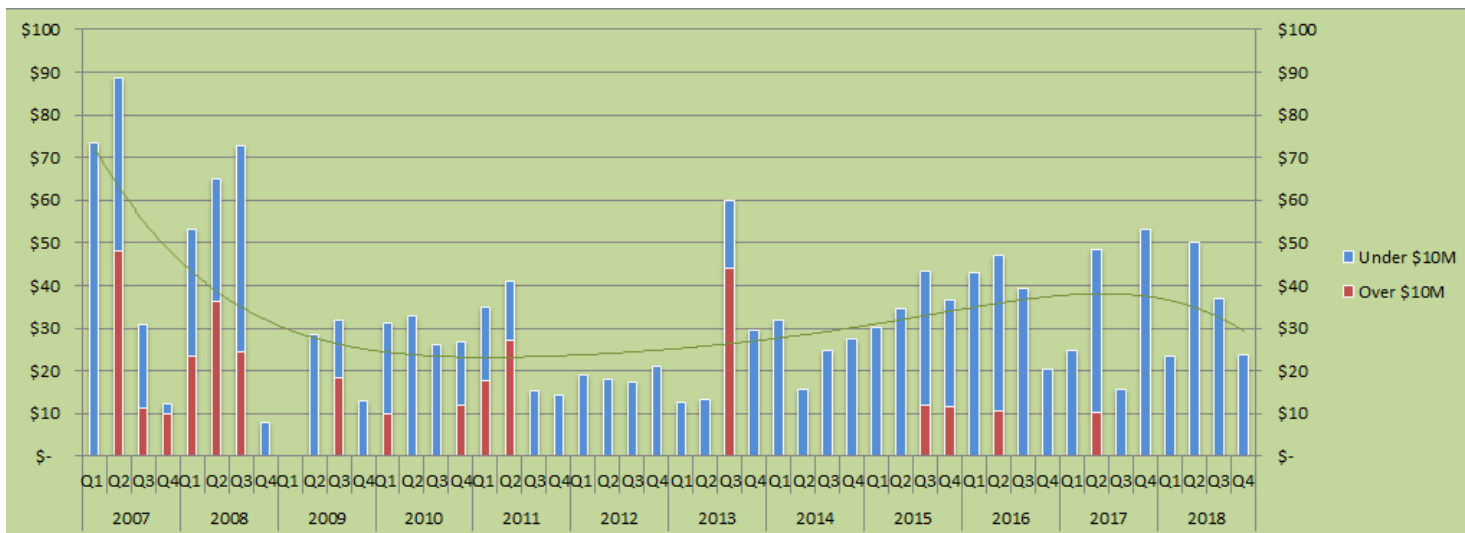






## Snowmass Village: Dollar Sales by Quarter - Single Family Homes (SFH)



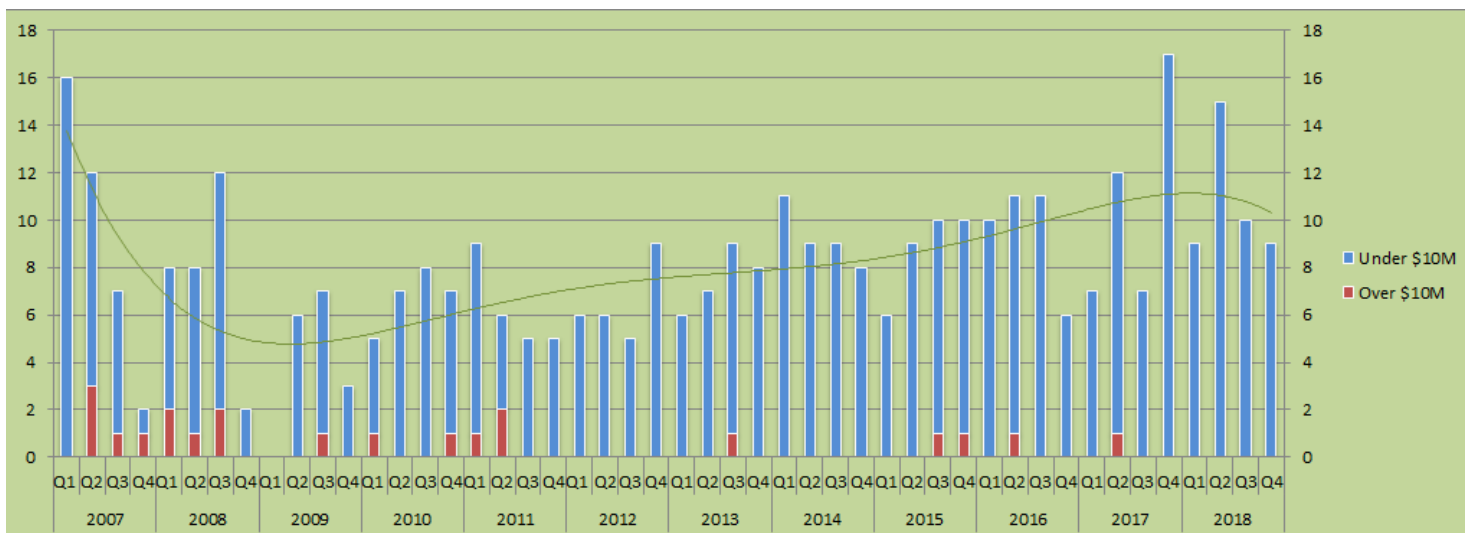
\*The trend line indicates the general pattern and direction of the Dollar Volume over this 11 year period.

© Estin Report: Q3 2018 [www.EstinAspen.com](http://www.EstinAspen.com)

Type	Desc	2007				2008				2009				2010				2011				2012				2013				2014				2015				2016				2017				2018			
		Q1	Q2	Q3	Q4	Q1	Q2	Q3	Q4	Q1	Q2	Q3	Q4	Q1	Q2	Q3	Q4	Q1	Q2	Q3	Q4	Q1	Q2	Q3	Q4	Q1	Q2	Q3	Q4	Q1	Q2	Q3	Q4	Q1	Q2	Q3	Q4	Q1	Q2	Q3	Q4								
Single Family Homes	\$10M & Over	0	48	11	10	23.3	36	25	0	0	0	19	0	10	0	12	17.8	27	0	0	0	0	0	0	0	0	0	0	0	44	0	0	0	0	0	12	12	0	11	0	0	0	10	0	0				
	Total \$ Vol.	73.3	89	31	12	53.1	65	73	8	0	29	32	13	31	32.7	26	27	35	41	15	14.2	19	18	17	21	13	13	60	29	32	16	25	27	30	35	43	37	43	39.2	20	25	48	16	53	23				
Annual \$10M & Over / % Chg:		\$69 / 0%				\$84 / 21%				\$19 / -78%				\$22 / 18%				\$45 / 104%				\$0 / -100%				\$44 / 0%				\$0 / -100%				\$24 / 0%				\$11 / -55%				\$10 / -5%				\$0 / -100%			
Annual \$ Volume / % Chg:		\$205 / 0%				\$199 / -3%				\$74 / -63%				\$117 / 59%				\$105 / -10%				\$75 / -29%				\$115 / 54%				\$100 / -13%				\$145 / 45%				\$150 / 3%				\$142 / -5%				\$134 / -5%			

© Estin Report: Q3 2018 [www.EstinAspen.com](http://www.EstinAspen.com)

## Snowmass Village: Unit Sales by Quarter - Single Family Homes (SFH)



\*The trend line indicates the general pattern and direction of the unit sales over this 11 year period.

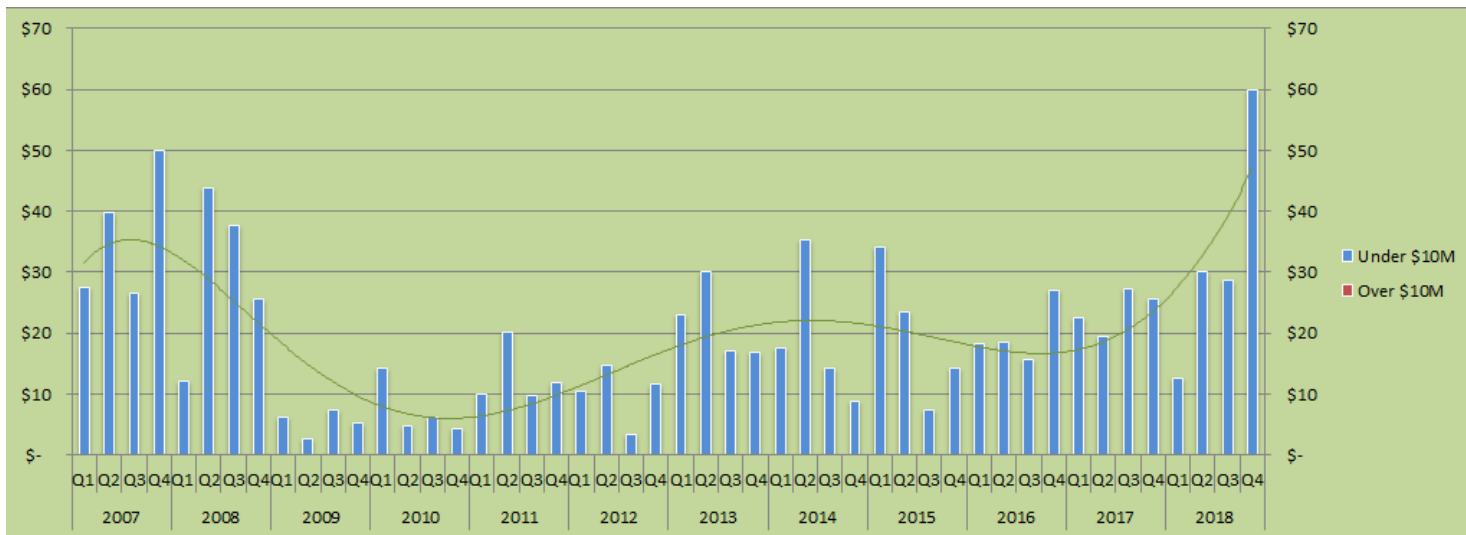
© Estin Report: Q3 2018 [www.EstinAspen.com](http://www.EstinAspen.com)

Type	Desc	2007				2008				2009				2010				2011				2012				2013				2014				2015				2016				2017				2018			
		Q1	Q2	Q3	Q4	Q1	Q2	Q3	Q4	Q1	Q2	Q3	Q4	Q1	Q2	Q3	Q4	Q1	Q2	Q3	Q4	Q1	Q2	Q3	Q4	Q1	Q2	Q3	Q4	Q1	Q2	Q3	Q4	Q1	Q2	Q3	Q4	Q1	Q2	Q3	Q4								
Single Family Homes	\$10M & Over	0	3	1	1	2	1	2	0	0	0	0	1	0	1	0	1	1	2	0	0	0	0	0	0	0	0	1	0	0	0	0	0	0	0	1	1	0	1	0	0	0	1	0	0				
	Total Sales	16	12	7	2	8	8	12	2	0	6	7	3	5	7	8	7	9	6	5	5	6	6	5	9	6	7	9	8	11	9	9	8	6	9	10	10	10	11	11	6	7	12	7	17				
Annual \$10M & Over / % Chg:		5 / 0%				5 / 0%				1 / -80%				2 / 100%				3 / 50%				0 / -100%				1 / 0%				0 / -100%				2 / 0%				1 / -50%				1 / 0%				0 / -100%			
Annual Unit Sales / % Chg:		37 / 0%				30 / -19%				16 / -47%				27 / 69%				25 / -7%				26 / 4%				30 / 15%				37 / 23%				35 / -5%				38 / 9%				43 / 13%				43 / 0%			

© Estin Report: Q3 2018 [www.EstinAspen.com](http://www.EstinAspen.com)



## Snowmass Village: Dollar Sales by Quarter - Condos



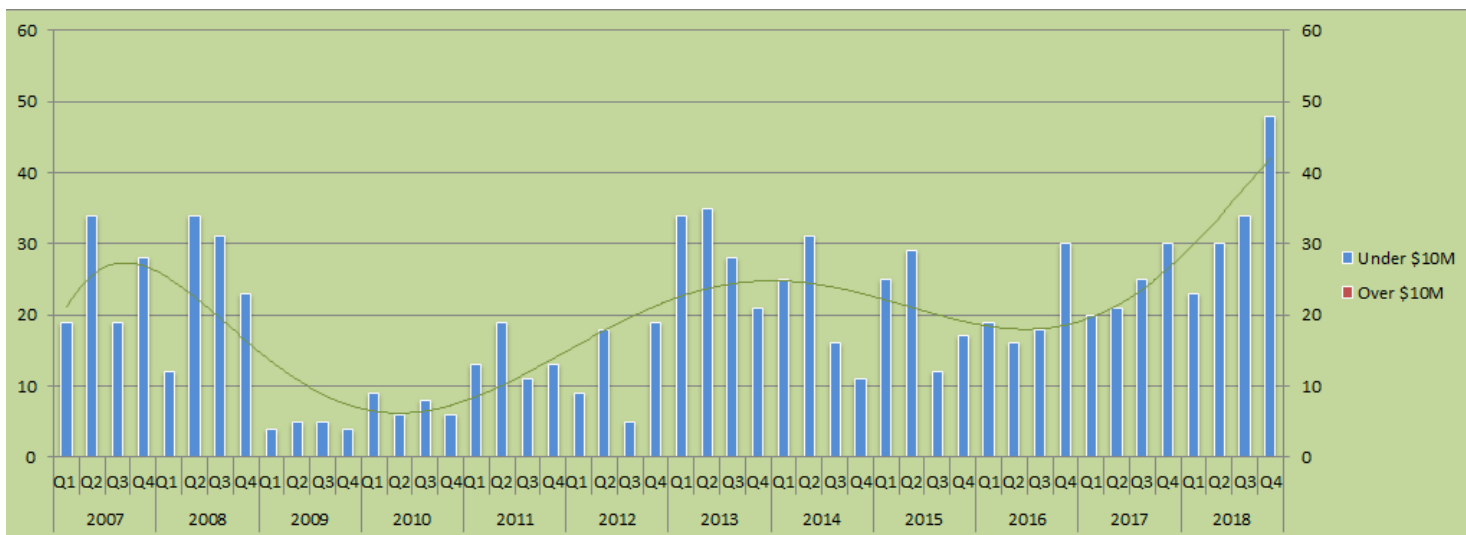
\*The trend line indicates the general pattern and direction of the Dollar Volume over this 11 year period.

© Estin Report: Q3 2018 www.EstinAspen.com

Type	Desc	2007				2008				2009				2010				2011				2012				2013				2014				2015				2016				2017				2018			
		Q1	Q2	Q3	Q4	Q1	Q2	Q3	Q4	Q1	Q2	Q3	Q4	Q1	Q2	Q3	Q4	Q1	Q2	Q3	Q4	Q1	Q2	Q3	Q4	Q1	Q2	Q3	Q4	Q1	Q2	Q3	Q4	Q1	Q2	Q3	Q4	Q1	Q2	Q3	Q4								
Condos	\$10M & Over	0	0	0	0	0	0	0	0	0	0	0	0	0	0	0	0	0	0	0	0	0	0	0	0	0	0	0	0	0	0	0	0	0	0	0	0	0	0	0	0	0	0	0	0				
	Total \$ Vol.	27.6	40	27	50	12.1	44	38	26	6.19	3	7.5	5.4	14	4.75	6.3	4.3	9.92	20	9.8	11.9	10	15	3.4	12	23	30	17	17	18	35	14	8.8	34	24	7.5	14	18	18	15.7	27	23	20	27	26	13	30	29	60
Annual \$10M & Over / % Chg:		\$0 / 0%				\$0 / 0%				\$0 / 0%				\$0 / 0%				\$0 / 0%				\$0 / 0%				\$0 / 0%				\$0 / 0%				\$0 / 0%				\$0 / 0%				\$0 / 0%							
Annual \$ Volume / % Chg:		\$144 / 0%				\$119 / -17%				\$22 / -82%				\$30 / 36%				\$52 / 74%				\$40 / -22%				\$87 / 117%				\$76 / -13%				\$79 / 5%				\$80 / 0%				\$95 / 19%				\$131 / 38%			

© Estin Report: Q3 2018 www.EstinAspen.com

## Snowmass Village: Unit Sales by Quarter - Condos



\*The trend line indicates the general pattern and direction of the unit sales over this 11 year period.

© Estin Report: Q3 2018 www.EstinAspen.com

Type	Desc	2007				2008				2009				2010				2011				2012				2013				2014				2015				2016				2017				2018			
		Q1	Q2	Q3	Q4	Q1	Q2	Q3	Q4	Q1	Q2	Q3	Q4	Q1	Q2	Q3	Q4	Q1	Q2	Q3	Q4	Q1	Q2	Q3	Q4	Q1	Q2	Q3	Q4	Q1	Q2	Q3	Q4	Q1	Q2	Q3	Q4	Q1	Q2	Q3	Q4								
Condos	\$10M & Over	0	0	0	0	0	0	0	0	0	0	0	0	0	0	0	0	0	0	0	0	0	0	0	0	0	0	0	0	0	0	0	0	0	0	0	0	0	0	0	0	0	0	0	0	0	0	0	0
	Total Sales	19	34	19	28	12	34	31	23	4	5	5	4	9	6	8	6	13	19	11	13	9	18	5	19	34	35	28	21	25	31	16	11	25	29	12	17	19	16	18	30	20	21	25	30	23	30	34	48
Annual \$10M & Over / % Chg:		0 / 0%				0 / 0%				0 / 0%				0 / 0%				0 / 0%				0 / 0%				0 / 0%				0 / 0%				0 / 0%				0 / 0%				0 / 0%							
Annual Unit Sales / % Chg:		100 / 0%				100 / 0%				18 / -82%				29 / 61%				56 / 93%				51 / -9%				118 / 131%				83 / -30%				83 / 0%				83 / 0%				96 / 16%				135 / 41%			

© Estin Report: Q3 2018 www.EstinAspen.com

