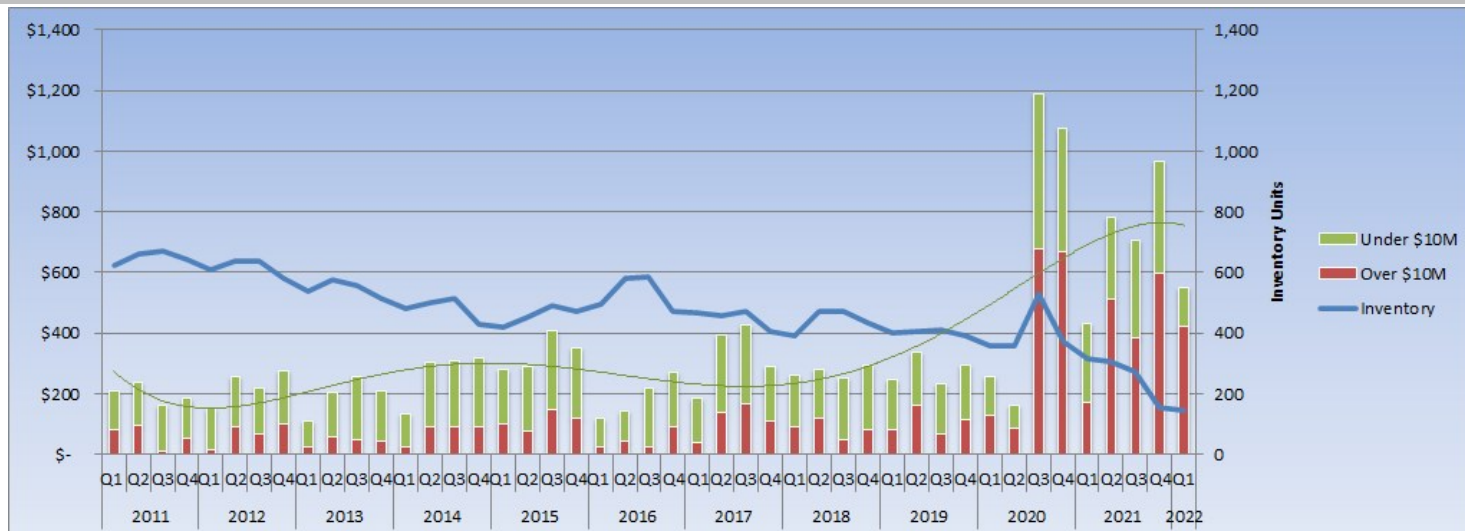




Estin Report

Aspen: Dollar Sales by Quarter - All Property Types Combined



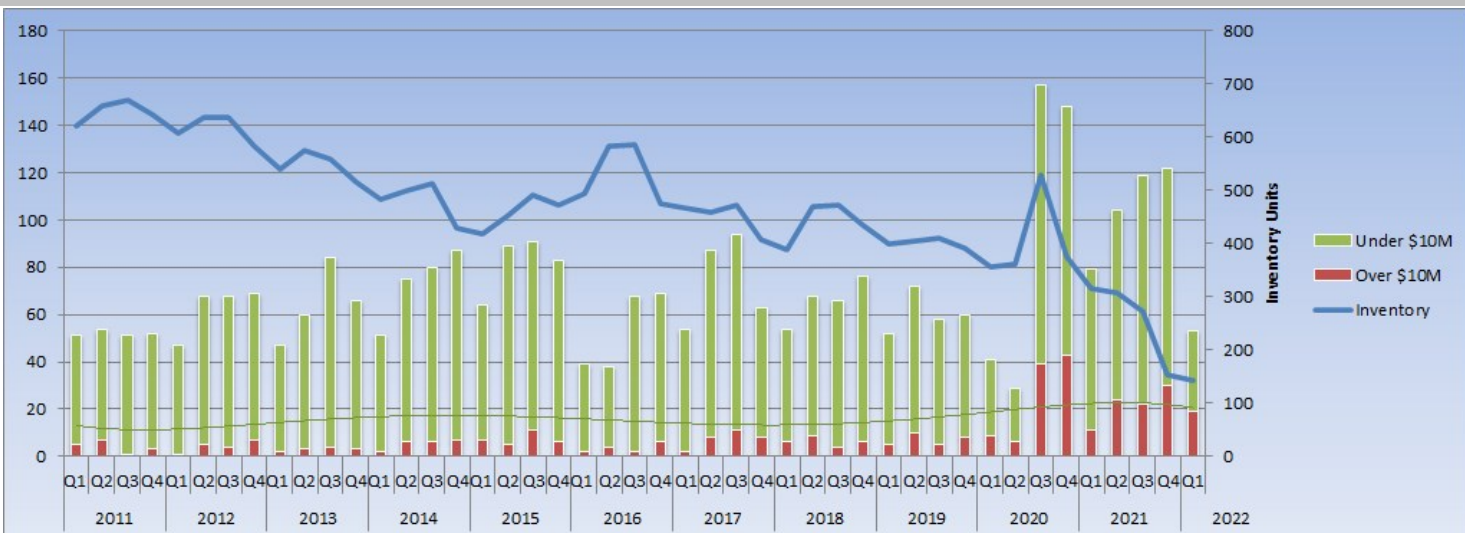
*The trend line indicates the general pattern and direction of the Dollar Volume over this 11 year period.

© Estin Report: Q1 2022 www.EstinAspen.com

Type	Desc	2011				2012				2013				2014				2015				2016				2017				2018				2019				2020				2021				2022			
		Q1	Q2	Q3	Q4	Q1	Q2	Q3	Q4	Q1	Q2	Q3	Q4	Q1	Q2	Q3	Q4	Q1	Q2	Q3	Q4	Q1	Q2	Q3	Q4	Q1	Q2	Q3	Q4	Q1	Q2	Q3	Q4	Q1	Q2	Q3	Q4	Q1	Q2	Q3	Q4								
Single Family Homes	\$10M & Over	83	98	14	52	16	91	67	101	26	59	47	42	25	65.4	90	59	86.9	65	146	93.4	0	45	26	61	39	115	154	101	64	94	36	57	62	139	67	90	61	70	606	543	160	514	310	539	336	0	0	
	Total \$ Vol.	155	168	104	121	82.4	187	150	202	64.8	137	144	130	81	178.5	189	217	154	168	307	228	57	59	124	167	100	272	266	200	138	162	161	125	145	214	149	109	113	856	746	291	626	425	699	379	0	0		
Condos	\$10M & Over	0	0	0	0	0	0	0	0	0	0	27.5	0	32	13.2	0	25	15	0	0	0	0	0	0	0	0	11	28	11	11	13	0	0	28	57	18	25.1	72	12	62	57	64	0	0					
	Total \$ Vol.	50.7	61	50	58	53	40	57	51	30.3	61	92	67	49	101	75	109	95.9	88	78	105	51	67	87	63	66	92	152	82	112	89	64	111	78	86	76	91	131	44	271	240	128	122	250	239	140	0	0	
Vacant Land	\$10M & Over	0	0	0	0	0	0	0	0	0	0	0	0	0	10	0	0	10	0	0	10	0	0	32	0	22	0	0	15	0	15	21	24	0	0	12	0	45.8	54	0	14	0	21	0	0				
	Total \$ Vol.	4.88	8.4	8.2	6.1	19.3	29	10	21	15	4.8	22	11	3.5	17	13	22	30.8	34	24	20.4	14	16	9.6	42	19	28	9	10	12	31	29	58	18	6.7	16	5.5	62.7	88	14	32	32	27	30	0	0			
Inventory		622	660	671	644	608	638	637	582	540	576	559	516	482	499	514	428	419	454	492	472	495	583	587	474	467	459	472	408	390	470	472	436	400	405	410	391	357	361	530	374	315	308	272	155	144	0	0	
Annual \$10M & Over % Chg:		\$247 / 0%				\$275 / 13%				\$174 / -3%				\$298 / 71%				\$440 / 48%			\$188 / -5%				\$453 / 141%			\$344 / -24%				\$431 / 25%				\$1564 / 262%			\$1668 / 7%			\$421 / -75%							
Annual \$ Volume / % Chg:		\$796 / 0%				\$901 / 13%				\$779 / -1%				\$1066 / 37%				\$1334 / 25%			\$757 / -43%				\$1297 / 71%			\$1090 / -24%				\$1115 / 2%				\$2682 / 141%			\$2884 / 8%			\$549 / -81%							

© Estin Report: Q1 2022 www.EstinAspen.com

Aspen: Unit Sales by Quarter - All Property Types Combined



*The trend line indicates the general pattern and direction of unit sales over this time period.

© Estin Report: Q1 2022 www.EstinAspen.com

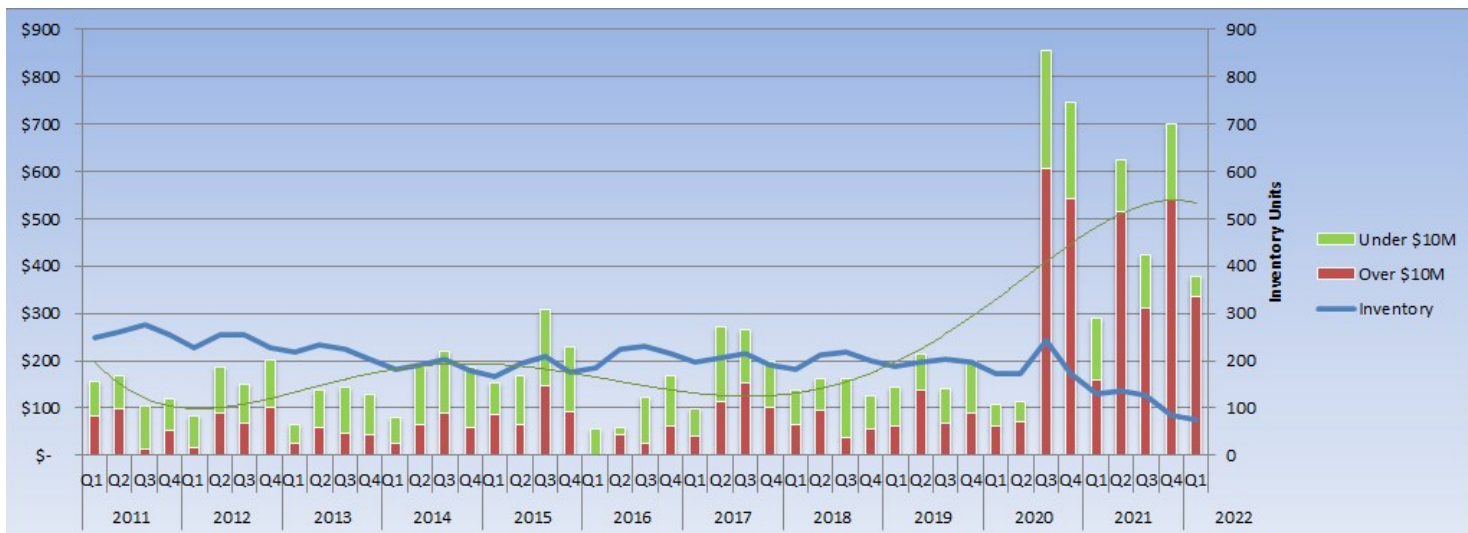
Property types include: single family homes, condos and vacant land/lots. Fractionals are not included.

Type	Desc	2011				2012				2013				2014				2015				2016				2017				2018				2019				2020				2021				2022			
		Q1	Q2	Q3	Q4	Q1	Q2	Q3	Q4	Q1	Q2	Q3	Q4	Q1	Q2	Q3	Q4	Q1	Q2	Q3	Q4	Q1	Q2	Q3	Q4	Q1	Q2	Q3	Q4	Q1	Q2	Q3	Q4	Q1	Q2	Q3	Q4	Q1	Q2	Q3	Q4								
Single Family Homes	\$10M & Over	5	7	1	3	1	5	4	7	2	3	4	3	2	4	6	5	6	4	11	5	0	4	2	4	2	7	10	7	4	7	3	4	4	9	5	6	3	5	34	34	10	24	19	26	14	0	0	0
	Total Sales	23	22	22	20	17	28	24	29	14	21	29	26	19	30	32	31	21	26	40	29	10	7	20	29	17	37	30	28	19	24	27	20	19	25	20	27	12	14	75	70	30	43	45	52	21	0	0	
Condos	\$10M & Over	0	0	0	0	0	0	0	0	0	0	0	2	0	2	2	1	0	0	1	1	0	1	0	0	0	1	1	2	1	1	1	0	0	2	5	1	2	5	1	2	4	0	2	4	0	0		
	Total Sales	26	27	26	29	25	28	40	32	26	36	47	36	29	38	42	47	35	54	43	47	27	25	44	33	30	45	60	32	30	36	29	45	30	43	35	31	25	14	76	65	46	55	70	65	30	0	0	
Vacant Land	\$10M & Over	0	0	0	0	0	0	0	0	0	0	0	0	0	0	0	0	1	0	0	0	1	0	0	2	0	1	0	0	1	0	1	1	1	0	0	1	0	3	4	0	0	1	0	1	0	0		
	Total Sales	2	5	3	3	5	12	4	8	7	3	8	4	0	3	7	6	9	8	9	8	7	2	6	4	7	7	5	4	3	5	8	10	11	3	4	3	2	4	1	6	13	3	6	4	0	0		
Inventory		622	660	671	644	608	638	637	582	540	576	559	516	482	499	514	428	419	454	492	472	495	583	587	474	467	459	472	408	390	470	472	436	400	405	410	391	357	361	530	374	315	308	272	155	144	0	0	
Annual \$10M & Over / % Chg:		16 / 0%				17 / 6%				12 / -29%				21 / 75%				29 / 38%				14 / -52%				29 / 107%				25 / -14%				28 / 12%				97 / 246%				87 / -10%				19 / -78%			
Annual Unit Sales / % Chg:		208 / 0%				252 / 21%				257 / 2%				293 / 14%				327 / 12%				214 / -35%				298 / 39%				242 / -11%				242 / -8%				375 / 55%				424 / 13%				53 / -88%			

© Estin Report: Q1 2022 www.EstinAspen.com



Aspen: Dollar Sales by Quarter - Single Family Homes (SFH)



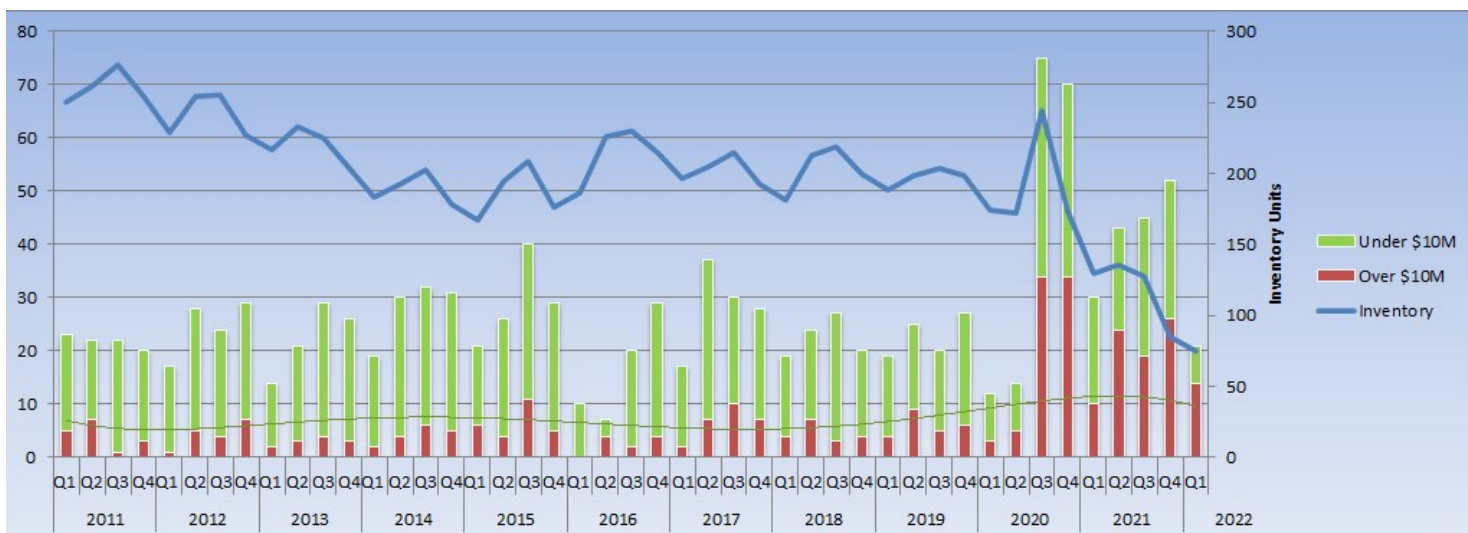
*The trend line indicates the general pattern and direction of the Dollar Volume over this 11 year period.

© Estin Report: Q1 2022 www.EstinAspen.com

Type	Desc	2011				2012				2013				2014				2015				2016				2017				2018				2019				2020				2021				2022			
Single Family	\$10M & Over	83	98	14	52	16	91	67	101	26	59	47	42	25	65.4	90	59	86.9	65	146	93.4	0	45	26	61	39	115	154	101	64	94	36	57	62	139	67	90	61	70	606	543	160	514	310	539	336	0	0	0
Homes	Total \$ Vol.	155	168	104	121	82.4	187	150	202	64.8	137	144	130	81	188	219	187	154	168	307	228	57	59	124	167	100	272	266	200	138	162	161	125	145	214	140	199	109	113	856	746	291	626	425	699	379	0	0	0
Inventory		250	261	276	254	229	254	255	227	217	233	225	204	183	192	203	178	167	194	209	176	186	226	230	215	196	205	215	192	181	213	219	199	188	198	204	198	174	172	244	173	130	136	128	85	75	0	0	0
Annual \$10M & Over / % Chg:		\$247 / 0%				\$275 / 12%				\$174 / -37%				\$239 / 37%				\$392 / 64%				\$131 / -66%				\$409 / 211%				\$251 / -39%				\$358 / 43%				\$1280 / 257%				\$1523 / 19%				\$336 / -78%			
Annual \$ Volume / % Chg:		\$549 / 0%				\$621 / 13%				\$476 / -23%				\$676 / 42%				\$857 / 27%				\$407 / -52%				\$838 / 106%				\$585 / -30%				\$698 / 19%				\$1823 / 161%				\$2040 / 12%				\$379 / -81%			

© Estin Report: Q1 2022 www.EstinAspen.com

Aspen: Unit Sales by Quarter - Single Family Homes (SFH)



*The trend line indicates the general pattern and direction of the unit sales over this 11 year period.

© Estin Report: Q1 2022 www.EstinAspen.com

Type	Desc	2011				2012				2013				2014				2015				2016				2017				2018				2019				2020				2021				2022				
		Q1	Q2	Q3	Q4	Q1	Q2	Q3	Q4	Q1	Q2	Q3	Q4	Q1	Q2	Q3	Q4	Q1	Q2	Q3	Q4	Q1	Q2	Q3	Q4	Q1	Q2	Q3	Q4	Q1	Q2	Q3	Q4	Q1	Q2	Q3	Q4	Q1	Q2	Q3	Q4									
Single Family	\$10M & Over	5	7	1	3	1	5	4	7	2	3	4	3	2	4	6	5	6	4	11	5	0	4	2	4	2	7	10	7	4	4	7	3	4	4	9	5	6	3	5	34	34	10	24	19	26	14	0	0	0
Homes	Total Sales	23	22	22	20	17	28	24	29	14	21	29	26	19	30	32	31	21	26	40	29	10	7	20	29	17	37	30	28	19	24	27	20	25	20	27	12	14	75	70	30	43	45	52	21	0	0	0		
Inventory		250	261	276	254	229	254	255	227	217	233	225	204	183	192	203	178	167	194	209	176	186	226	230	215	196	205	215	192	181	213	219	199	188	198	204	198	174	172	244	173	130	136	128	85	75	0	0	0	
Annual \$10M & Over / % Chg:		16 / 0%				17 / 6%				12 / -29%				17 / 42%				26 / 53%				10 / -62%				26 / 160%				18 / -31%				24 / 33%				76 / 217%				79 / 4%				14 / -82%				
Annual Unit Sales / % Chg:		87 / 0%				98 / 13%				90 / -8%				112 / 24%				116 / 4%				66 / -43%				112 / 70%				90 / -20%				91 / 1%				171 / 88%				170 / -1%				21 / -88%				

© Estin Report: Q1 2022 www.EstinAspen.com



Aspen: Dollar Sales by Quarter - Condos



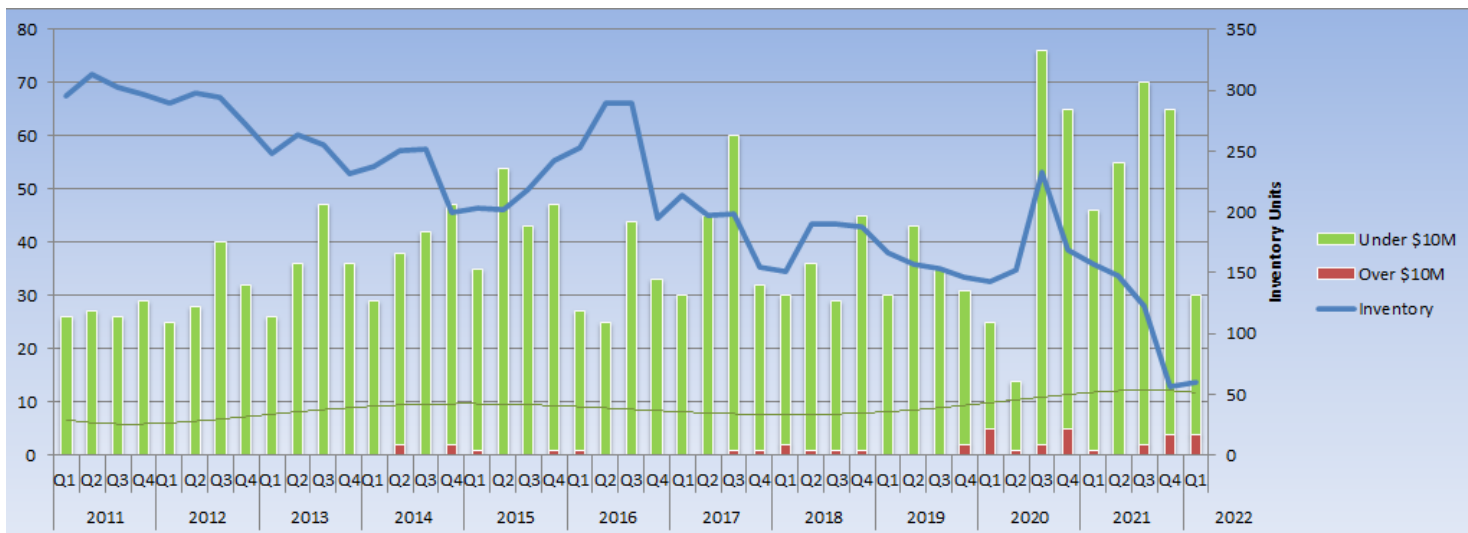
*The trend line indicates the general pattern and direction of the Dollar Volume over this 11 year period.

© Estin Report: Q1 2022 www.EstinAspen.com

Type	Desc	2011				2012				2013				2014				2015				2016				2017				2018				2019				2020				2021				2022			
		Q1	Q2	Q3	Q4	Q1	Q2	Q3	Q4	Q1	Q2	Q3	Q4	Q1	Q2	Q3	Q4	Q1	Q2	Q3	Q4	Q1	Q2	Q3	Q4	Q1	Q2	Q3	Q4	Q1	Q2	Q3	Q4	Q1	Q2	Q3	Q4	Q1	Q2	Q3	Q4								
Condos	\$10M & Over	0	0	0	0	0	0	0	0	0	0	0	0	27.5	0	32	13.2	0	0	25	15	0	0	0	0	0	0	11	12	28	11	11	13	0	0	0	28	57	18	25.1	72	12	0	62	57	64	0	0	
	Total \$ Vol.	50.7	61	50	58	53	40	57	51	30.3	61	92	67	49	101	75	109	95.9	88	78	105	51	67	87	63	66	92	152	82	112	89	64	111	78	86	76	91	131	44	271	240	128	122	250	239	140	0	0	
Inventory		295	313	302	296	290	298	294	272	248	264	255	232	237	251	252	200	203	202	219	242	253	289	290	195	214	197	198	155	151	190	190	188	167	157	154	146	143	152	233	169	157	148	123	56	60	0	0	
Annual \$10M & Over / % Chg:		\$0 / 0%				\$0 / 0%				\$0 / 0%				\$60 / 0%				\$38 / -36%				\$15 / -61%				\$22 / 48%				\$63 / 184%				\$28 / -56%				\$172 / 517%				\$131 / -24%				\$64 / -51%			
Annual \$ Volume / % Chg:		\$219 / 0%				\$200 / -9%				\$251 / 25%				\$334 / 33%				\$367 / 10%				\$268 / -27%				\$392 / 47%				\$376 / -4%				\$331 / -12%				\$687 / 108%				\$739 / 8%				\$140 / -81%			

© Estin Report: Q1 2022 www.EstinAspen.com

Aspen: Unit Sales by Quarter - Condos



*The trend line indicates the general pattern and direction of the unit sales over this 11 year period.

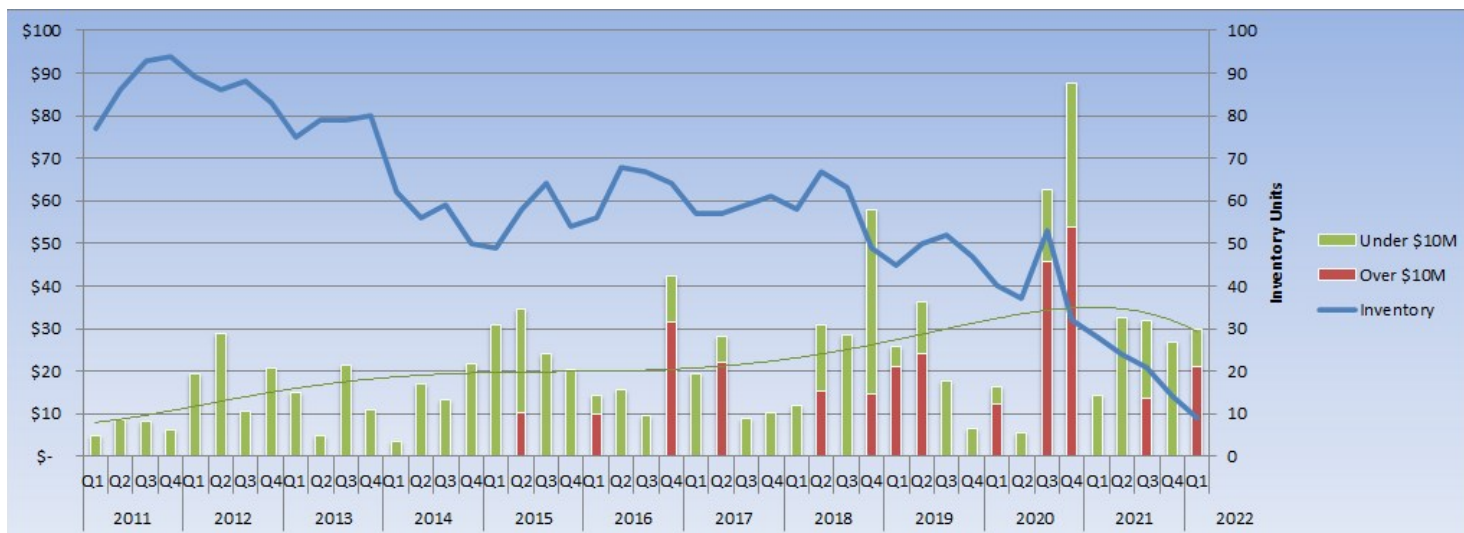
© Estin Report: Q1 2022 www.EstinAspen.com

Type	Desc	2011				2012				2013				2014				2015				2016				2017				2018				2019				2020				2021				2022			
		Q1	Q2	Q3	Q4	Q1	Q2	Q3	Q4	Q1	Q2	Q3	Q4	Q1	Q2	Q3	Q4	Q1	Q2	Q3	Q4	Q1	Q2	Q3	Q4	Q1	Q2	Q3	Q4	Q1	Q2	Q3	Q4	Q1	Q2	Q3	Q4	Q1	Q2	Q3	Q4								
Condos	\$10M & Over	0	0	0	0	0	0	0	0	0	0	0	0	0	0	0	0	0	0	0	0	0	0	0	0	0	0	0	0	0	0	0	0	0	0	0	0	0	0	0	0	0	0						
	Total Sales	26	27	26	29	25	28	40	32	26	36	47	36	29	38	42	47	35	54	43	47	27	25	44	33	30	45	60	32	30	36	29	45	30	43	35	31	25	14	76	65	46	55	70	65	30	0	0	
Inventory		295	313	302	296	290	298	294	272	248	264	255	232	237	251	252	200	203	202	219	242	253	289	290	195	214	197	198	155	151	190	190	188	167	157	154	146	143	152	233	169	157	148	123	56	60	0	0	
Annual \$10M & Over / % Chg:		0 / 0%				0 / 0%				0 / 0%				4 / 0%				2 / -50%				1 / -50%				2 / 100%				5 / 150%				2 / -60%				13 / 550%				7 / -46%				4 / -43%			
Annual Unit Sales / % Chg:		108 / 0%				125 / 16%				145 / 16%				156 / 8%				179 / 15%				129 / -28%				167 / 29%				140 / -16%				139 / -1%				180 / 29%				236 / 31%				30 / -87%			

© Estin Report: Q1 2022 www.EstinAspen.com



Aspen: Dollar Sales by Quarter - Vacant Land/Lots



*The trend line indicates the general pattern and direction of the Dollar Volume over this 11 year period.

© Estin Report: Q1 2022 www.EstinAspen.com

Type	Desc	2011				2012				2013				2014				2015				2016				2017				2018				2019				2020				2021				2022			
		Q1	Q2	Q3	Q4	Q1	Q2	Q3	Q4	Q1	Q2	Q3	Q4	Q1	Q2	Q3	Q4	Q1	Q2	Q3	Q4	Q1	Q2	Q3	Q4	Q1	Q2	Q3	Q4	Q1	Q2	Q3	Q4	Q1	Q2	Q3	Q4	Q1	Q2	Q3	Q4								
Vacant Land	\$10M & Over	0	0	0	0	0	0	0	0	0	0	0	0	0	0	0	0	0	0	0	0	0	0	0	0	0	0	0	0	0	0	0	0	0	0	0	0	0	0	0	0	0	0	0	0				
	Total \$ Vol.	4.88	8.4	8.2	6.1	19.3	29	10	21	15	4.8	22	11	3.5	17	13	22	30.8	34	24	20.4	14	16	9.6	42	19	28	9.1	10	12	31	29	58	26	36	18	6.7	16	5.5	62.7	88	14	32	32	27	30	0	0	
Inventory		77	86	93	94	89	86	88	83	75	79	79	80	62	56	59	50	49	58	64	54	56	68	67	64	57	57	59	61	58	67	63	49	45	50	52	47	40	37	53	32	28	24	21	14	9	0	0	
Annual \$10M & Over / % Chg:		\$0 / 0%				\$0 / 0%				\$0 / 0%				\$0 / 0%				\$10 / 0%				\$42 / 311%				\$22 / -47%				\$30 / 36%				\$45 / 51%				\$112 / 148%				\$14 / -88%				\$21 / 54%			
Annual \$ Volume / % Chg:		\$28 / 0%				\$79 / 188%				\$52 / -34%				\$56 / 7%				\$110 / 97%				\$82 / -25%				\$67 / -19%				\$129 / 93%				\$86 / -33%				\$172 / 100%				\$105 / -39%				\$30 / -72%			

© Estin Report: Q1 2022 www.EstinAspen.com

Aspen: Unit Sales by Quarter - Vacant Land/Lots



*The trend line indicates the general pattern and direction of the unit sales over this 11 year period.

© Estin Report: Q1 2022 www.EstinAspen.com

Type	Desc	2011				2012				2013				2014				2015				2016				2017				2018				2019				2020				2021				2022			
		Q1	Q2	Q3	Q4	Q1	Q2	Q3	Q4	Q1	Q2	Q3	Q4	Q1	Q2	Q3	Q4	Q1	Q2	Q3	Q4	Q1	Q2	Q3	Q4	Q1	Q2	Q3	Q4	Q1	Q2	Q3	Q4	Q1	Q2	Q3	Q4	Q1	Q2	Q3	Q4								
Vacant Land	\$10M & Over Total Sales	0	0	0	0	0	0	0	0	0	0	0	0	0	0	0	0	1	0	0	0	1	0	0	0	0	0	0	1	1	1	0	0	0	1	0	3	4	0	0	1	0	1	0	0				
		2	5	3	3	5	12	4	8	7	3	8	4	3	7	6	9	8	9	8	7	2	6	4	7	7	5	4	3	5	8	10	11	3	4	3	2	4	1	6	13	3	6	4	5	2	0	0	
Inventory		77	86	93	94	89	86	88	83	75	79	79	80	62	56	59	50	49	58	64	54	56	68	67	64	57	57	59	61	58	67	63	49	45	50	52	47	40	37	53	32	28	24	21	14	9	0	0	
Annual \$10M & Over / % Chg:		0 / 0%				0 / 0%				0 / 0%				0 / 0%				1 / 0%				3 / 200%				1 / -67%				2 / 100%				2 / 0%				8 / 300%				1 / -88%				1 / 0%			
Annual Unit Sales / % Chg:		13 / 0%				29 / 123%				22 / -24%				25 / 14%				32 / 28%				19 / -41%				19 / 0%				34 / 79%				12 / -65%				24 / 100%				18 / -25%				2 / -89%			

© Estin Report: Q1 2022 www.EstinAspen.com