



AGENDA

City of Aspen, Open Space and Trails Board Meeting
October 15, 2020 – 5:00 pm
via WebEx Meeting

Meeting number (access code): 126 617 1186

Meeting password: 81611

Thursday, October 15, 2020

5:00 pm | (UTC-06:00) Mountain Time (US & Canada) | 3 hrs

Join by phone

+1-408-418-9388 United States Toll

Join from a video system or application

Dial 1266171186@coa.my.webex.com

You can also dial 173.243.2.68 and enter your meeting number.

Need help? Go to <http://help.webex.com>

1. Adoption of the Agenda
2. Public Comments (for items not on the agenda)
3. Approval of Minutes
4. Staff Comments
5. Board Comments
6. New Business
 - Lift One Lodge Application
7. Old Business
8. Establish Next Meeting Date(s) – Board Retreat - Wednesday, October 28, Next regular meeting – Thursday, November 19
9. Adjourn



MINUTES

City of Aspen, Open Space and Trails Board Meeting
Held on September 17, 2020
5:00pm – Online Meeting

City OST Board Members Present: Charlie Eckart, Julie Hardman, Adam McCurdy.

City Staff Members Present: Austin Weiss, Mike Tunte, Brian Long, Micah Davis.

Adoption of the Agenda: Julie moved to adopt the agenda; Adam seconded.

Approval of the Minutes: Adam moved to approve the minutes and Julie seconded.

Public Comments, for topics not on the agenda: None.

Staff Comments: Austin brought the Board up to date on the process of filling Board vacancies. There are two strong applicants and additional applicants are desired; please spread the word. Site visits to the Pride of Aspen are scheduled: Charlie Friday, Adam Wednesday possibly with Diane. Austin and Mike attended the initial meeting for Pitkin County's update to Sky Mountain Park's management plan; this Board will be involved in the process. Charlie asked if there was mention of the unauthorized road cut on adjacent private land; Austin said there was an indirect mention. Mike updated the Board on the completion of the new park at Burlingame; due to COVID, he will offer the Board a tour in lieu of a gathering. Charlie asked about Lift 1A Park progress; Mike said that it is moving along and Ben Anderson of Community Development will present at the October Board meeting. Brian reported that railings will be installed at the Mill Street and Cemetery Lane underpasses. Micah mentioned plans to replace the bridge at the Post Office Trail and to move fallen trees in the river between Herron and Newberry Parks to prevent damming. Charlie asked about any further communication with Jacob of RFOV regarding a site visit on the Rio Grande Trail; Austin said that is pending.

Board Comments: Julie mentioned she would like to discuss developing a fat bike trail in Snowmass Village with Brian. Charlie said he would like to be in that planning loop. Julie asked about special events as a topic in Sky Mountain Park's Management Plan; Austin said there is such a section and he will get back to her with more information. Adam mentioned close calls between cyclists and vehicles in the Bike-pedway at the intersection near the Red Brick, emphasizing the need for additional safety measures there, such as a stop sign. Brian will bring this to PABST. Adam mentioned that he spoke with the consultants doing water resilience



research for the City and he will share comments they have gathered. His input to consultants emphasized irrigation to maintain parks as a high priority, and that gray water could be part of creative sourcing. Charlie communicated Howie's proxy concerning clarity on the process of street work, such as painting additional sharrows in the Hallam Street Bike-pedway. Charlie asked whether the Engineering Dept. can be bypassed in this process. Brian explained that Engineering makes determinations with regard to street painting per code. Streets uses its crew to carry out painting of normal street striping, while a separate crew (San Juan Striping) is hired to do bike infrastructure painting. Brian said that Engineering's goal is for the sharrows to serve as guidance to cyclists on the best route between points and not necessarily to serve as automobile deterrents. Brian will run this past PABST to gather their input on this topic.

New Business: Austin updated the Board on the re-routing of the Aspen School District Trail, as an emergency measure to address the District's needs during COVID and to address an increase in cyclist traffic on Maroon Creek Road. Austin had meetings with the Assistant Superintendent and Mike and Brian to create a temporary "bread crumb" route marked with stencils and additional signs to help cyclists navigate through the campus. Possible future steps may include building a dedicated trail along Maroon Creek Road and alignment improvements on the east side of campus. A discussion of various issues followed, including the narrow sidewalk/trail corridor near the Cottage and concerning eBike travel speeds there; the narrow sidewalk/trail in front of the high school; and the bottleneck between yellow posts by the gate near the Middle School. Austin clarified jurisdictional boundaries going into the schools and the history of the open community campus along with current safety challenges. Charlie emphasized the need for a long-term solution, including the potential future trail along the west side of Maroon Creek Road. Further discussion touched on considerations for cyclist experience levels, seamless connections, pedestrian-cyclist interaction areas, and other future solutions. Charlie mentioned problematic areas including the area between the ARC side of the pedestrian bridge and the bus stop on Maroon Creek Road.

Old Business: Mike provided a timeline for the completion of the Marolt Management Plan in which adoption of the plan is projected for May 2021. Charlie asked whether a small bike park will be part of the plan; Austin explained that this is identified in the plan as an opportunity for staff to explore. Charlie asked about the status of homeless camping on the property; Brian mentioned that the camp provided at the Intercept Lot has greatly reduced this issue on the property.

Mike provided a draft agenda for the October 28th OSTB Retreat, which must be held online. Julie suggested integrating a site visit for an in-person element and incorporating 15 minute breaks. Mike responded that in-person group site visits are unfortunately not permitted and that time is needed to cover complex agenda topics. Charlie emphasized planning sufficient



time to cover future projects. Austin emphasized working on the Parks tax fund reauthorization as another priority.

Adjourned: Adam moved to adjourn; Julie seconded.

Next Meeting Date(s): October 15, 2020



Lift One Lodge Review with Open Space and Trails Committee

OCTOBER 15TH, 2020



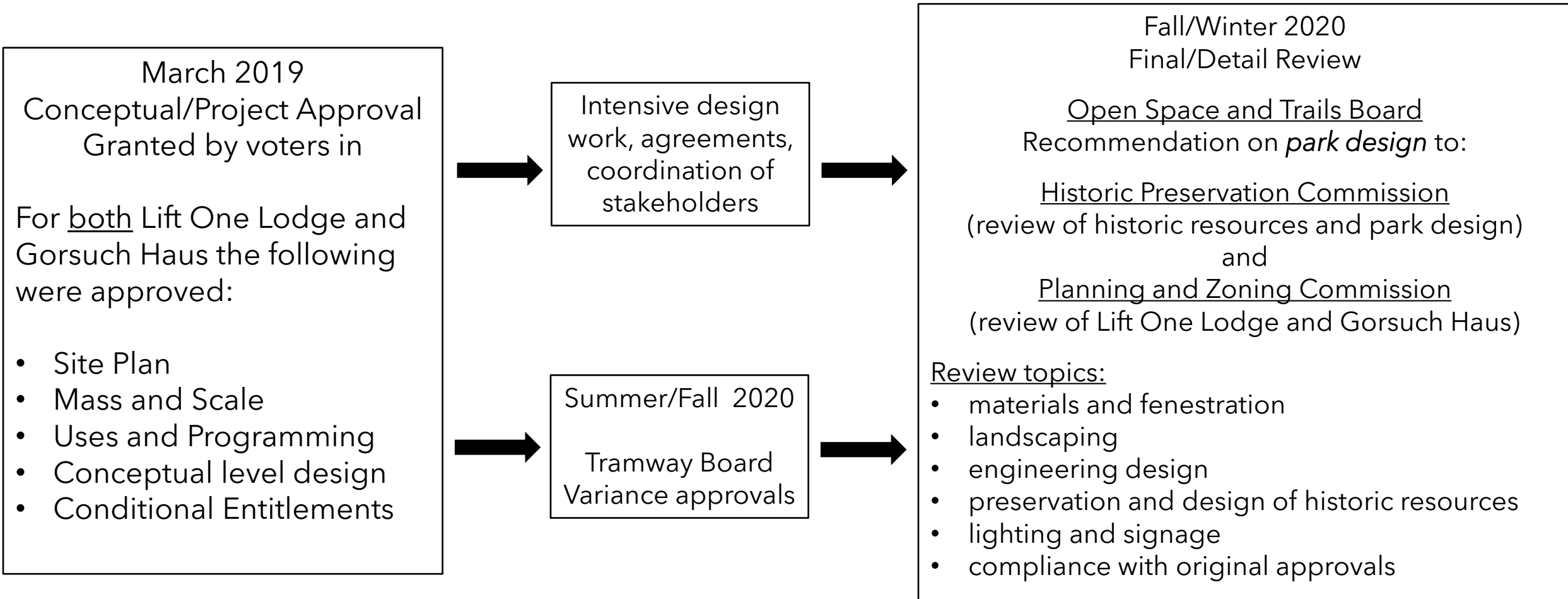
Presenters:

Ben Anderson, Community Development, City of Aspen – Process Discussion

Michael Tunte, City of Aspen Parks & Open Space – Park Design

Laura Kirk, DHM Design – Lift One Lodge Overview

Lift One Corridor – The Review Process



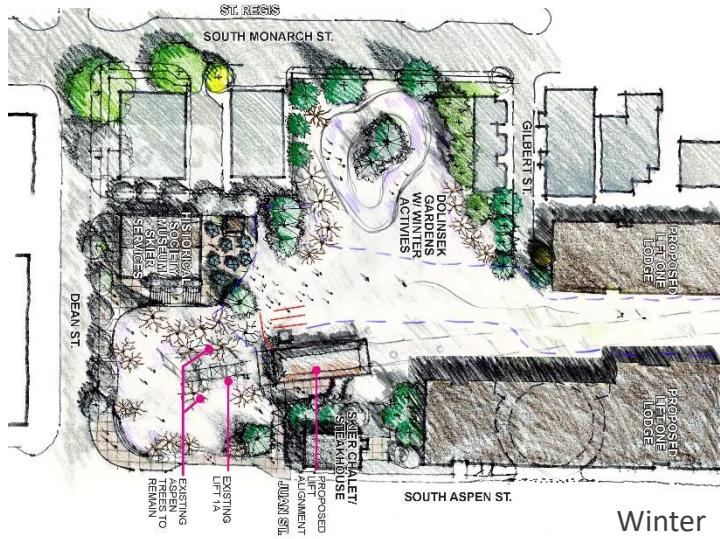
A stylized graphic of a green leaf, composed of several triangular and quadrilateral segments separated by white lines, positioned on the left side of the slide.

LIFT ONE CORRIDOR

Parks and Open Space
Improvements



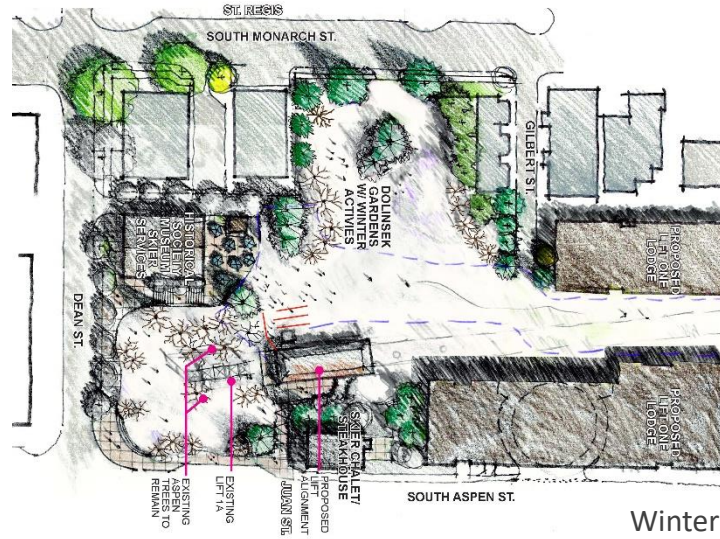
Summer



Winter



Summer



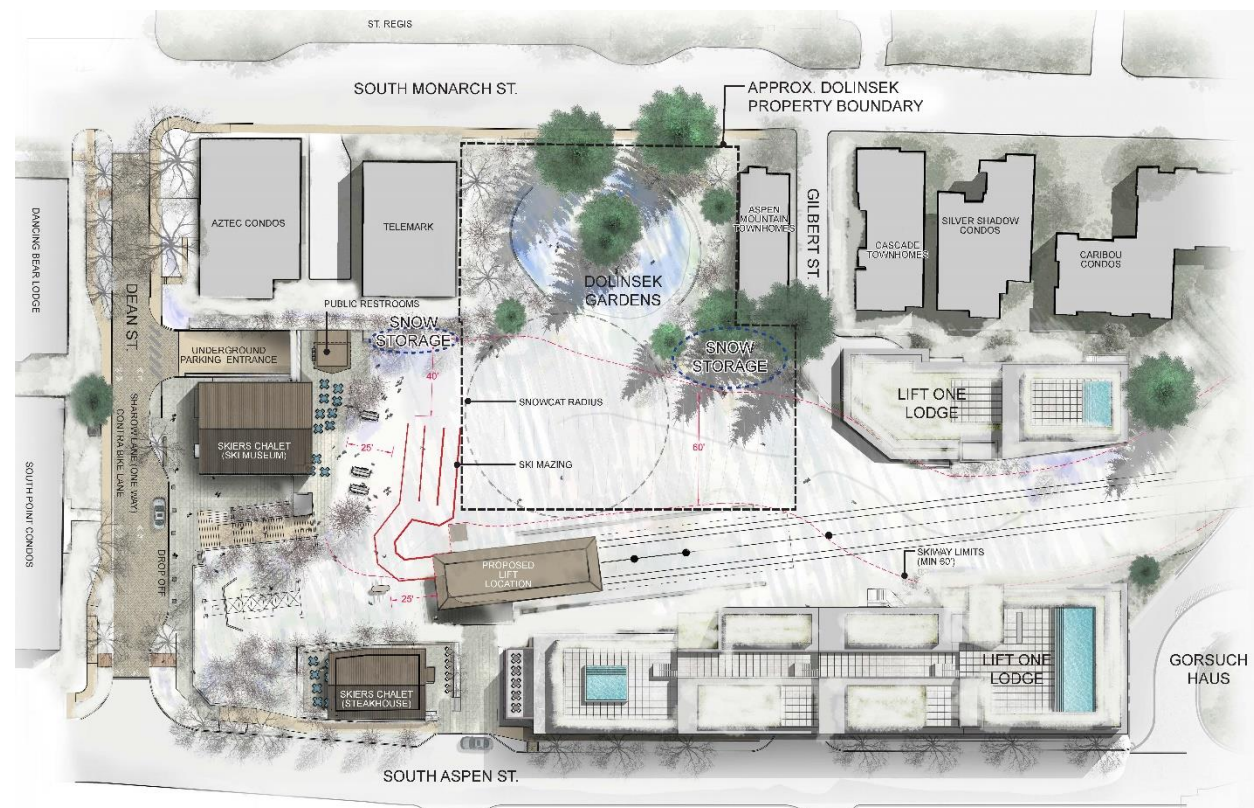
Winter



Summer



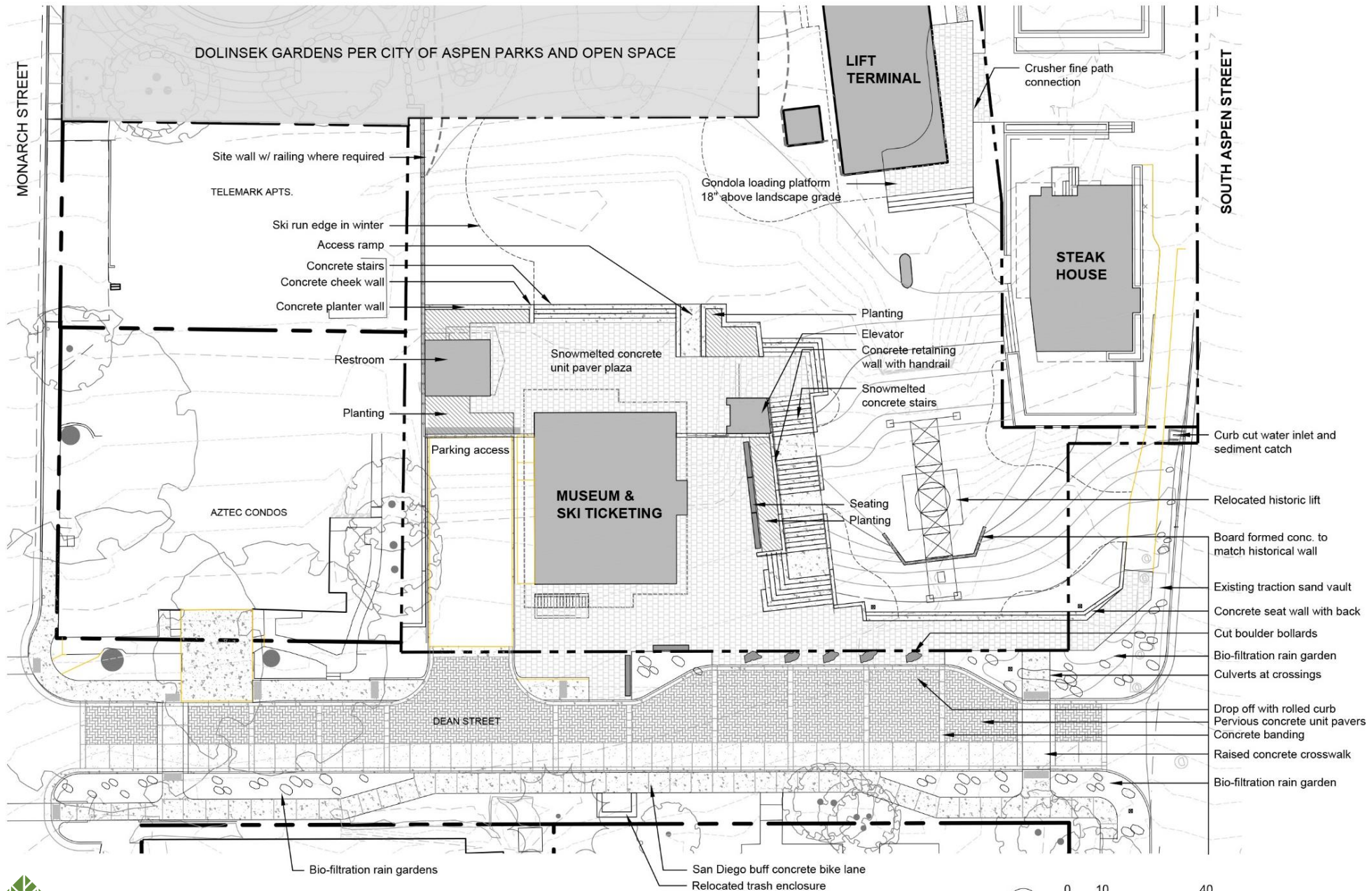
Summer



Winter

ILLUSTRATIVE SITE PLAN





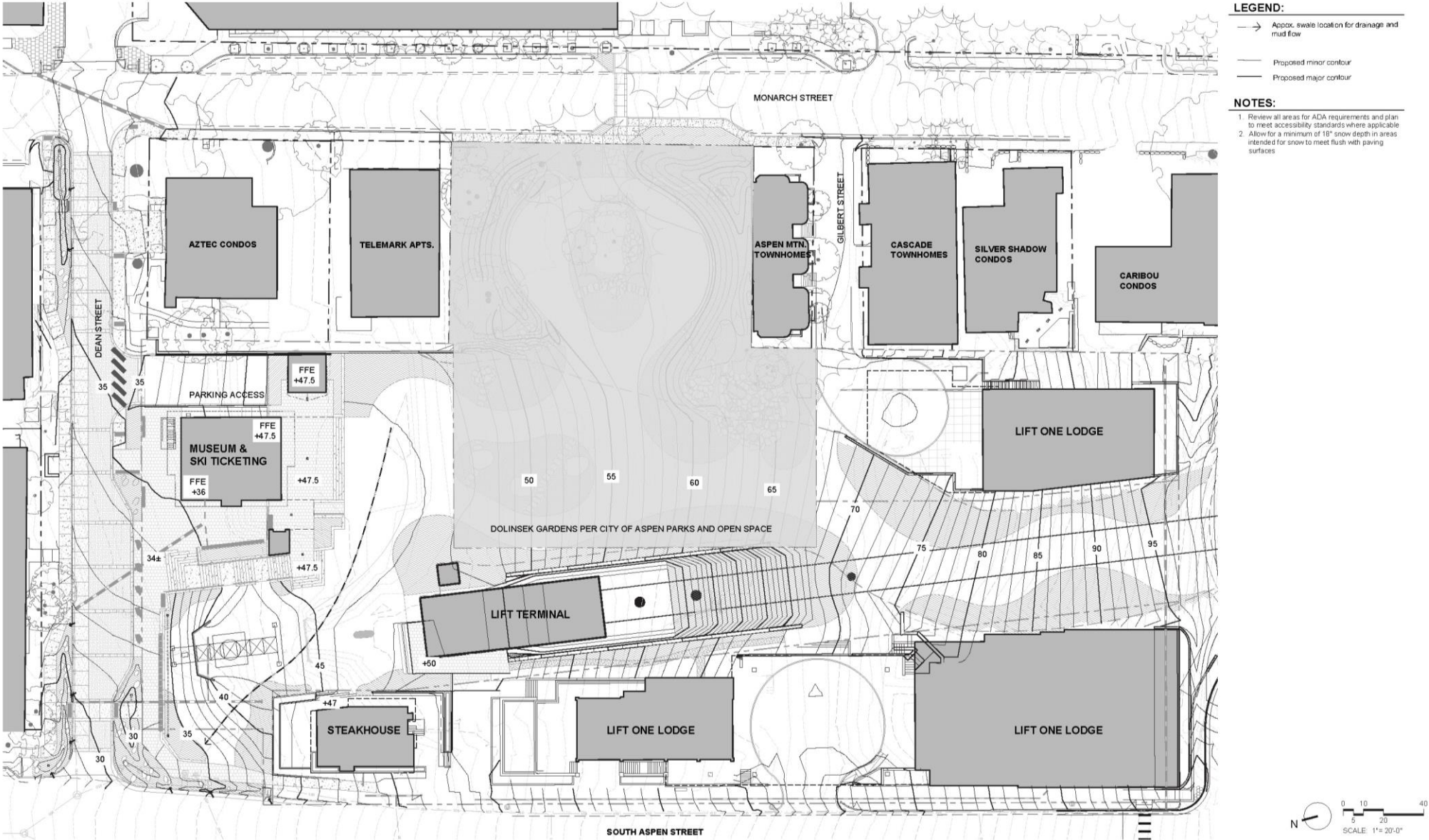
LEGEND:

	PERVIOUS PAVING- STREET
	PEDESTRIAN PAVERS
	GREY CONC. PAVING
	SAN DIEGO BUFF CONC. PAVING
	CRUSHER FINES PATH
	PLANTING AREA
	GREY CONC. WALLS
	HAND RAIL AND SAFETY RAILING

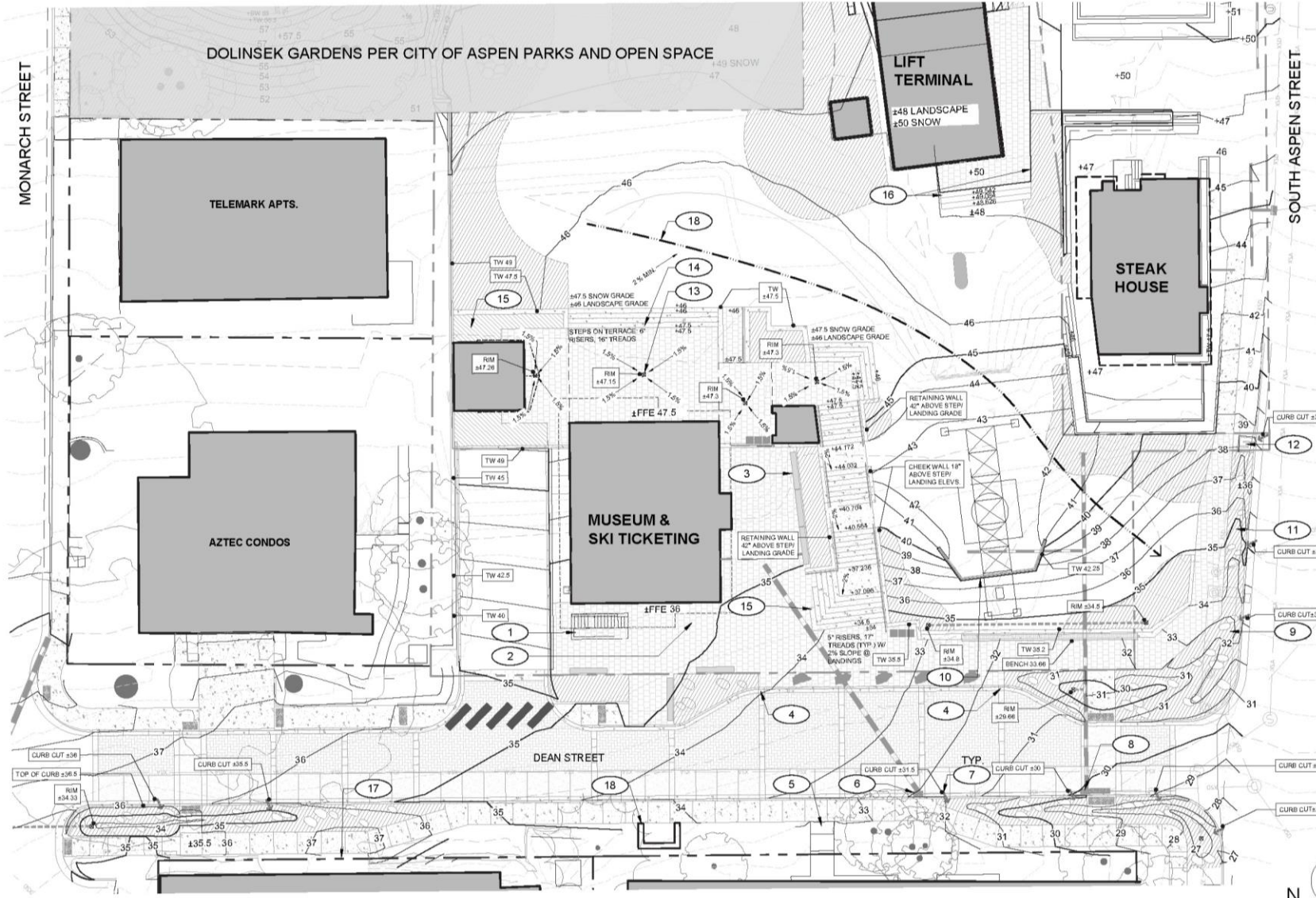
NOTES:

1. Maintain minimum of 18" elevation difference between hardscape and landscape surface to allow for winter snow depth.
2. Planters in front of museum and ski ticketing at TBD. To be developed in conjunction with COA Parks and Open Space.
3. Interface with Aztec Condos TBD. To be reviewed by COA.

SITE GRADING AND DRAINAGE PLAN



SITE GRADING AND DRAINAGE PLAN



LEGEND:

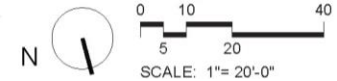
- Approx. buried pipe alignment
- * Approx. drain location
- RM Approx. RIM, INV., or TW elev.
- SW Approx. spot elev.
- 56- Proposed minor contour
- 66- Proposed major contour
- Approx. curb cut location for storm water entry
- Approx. swale location for drainage and mud flow

NOTES:

1. Materials shown on this plan are conceptual and will evolve as the design continues to develop.
2. It is the desire of the Parks department for this project to implement high performance bio-filtration gardens that are functional, maintainable, ecologically beneficial, and aesthetically beautiful. Bio filtration gardens should utilize best practices and be designed to be enduring.

SUPPLEMENTAL NOTES:

1. Design team to determine number or risers needed based on final grades and need for associated planter. Team to confirm step configuration as needed with with Aspen Historical Society
2. Design team to determine layout, grading and materials as needed for ADA access into museum
3. Design team to coordinate with COA Parks on aesthetics of trench drain or slot drain
4. Location at drop off where curb tapers down to flush concrete band
5. Design team to determine grade transitions and any reconfiguring required to tie into steps off neighboring property
6. Reconfigure storm drain location down stream of first curb cut to allow for greater water input into bio-filtration gardens
7. Approximate curb cut locations (storm water input into bio-filtration garden from flow line)
8. Move storm inlet as to not be located in crossing and to allow for maximum input of allowable water into bio-filtration gardens
9. Water quality vault. Ensure functions of vault are maintained. Soil elevations are flush or slightly below rim elevations at access lids, and account for soil depths w/ plant selection and placement.
10. Ensure grades surrounding historic lift structure resemble current grade relationships to structure. Further study of top of footing elevations, top of wall, bottom of wall and clearance under structure should occur as it relates to existing and proposed conditions
11. If cobble or armoring is required in flow line of bio-retention planter, coordinate w/ parks on aesthetics of armoring
12. Consider a sediment catch(es) at most up stream location of storm water input into bio-filtration
13. Coordinate with COA Parks as it relates to aesthetics of drains
14. Maintain minimum of 18" elevation difference between hardscape and landscape surface to allow for water snow depth
15. Ensure all enclosed planters tie into drainage systems as needed
16. Design team to coordinate need for railings and exact layout and grading requirements for gondola loading and surrounding areas
17. Design team to consider existing entry points at Dancing Bear
18. Design team to consider need for conc. pad and grading as it relates to placement on final determined dumpster location



MATERIAL PALETTE

DEAN STREET PAVING CHARACTER



Example of color and pattern for pavers on Dean St.



Street Paving - Permeable pavers with interlocking pattern. Concrete bands are both decorative and provide durable framing for pavers



San Diego Buff
5237

Bike lane
City of Aspen standard
integral color cast in
place concrete with
broom finish.

MATERIAL PALETTE

BUILT IN SEATING CHARACTER



Reclaimed

Spruce and Fir that have to be removed can be reclaimed and milled for use as benches



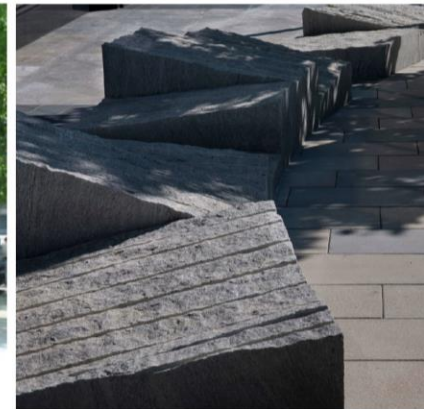
Inlaid or cantilevered wood bench

The historic lift will require retaining along Dean Street, which presents an opportunity for seating. Utilizing thermally modified wood inlaid or cantilevered adds comfort and warmth to concrete



Cut Boulders

The bollards along the Dean Street drop off can be cut boulders which also provide seating.



MATERIAL PALETTE

RAIN GARDENS CHARACTER



Stormwater Management
Rain gardens along Dean street to address stormwater quantity and quality



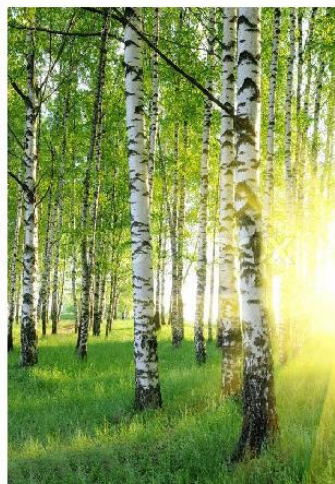
Curb cuts in gutter to be re-enforced with steel for safety and protection from plows



Grate, box culvert, or "bridge" type crossing where walkways cross bio-swales

PLANTING PALETTE

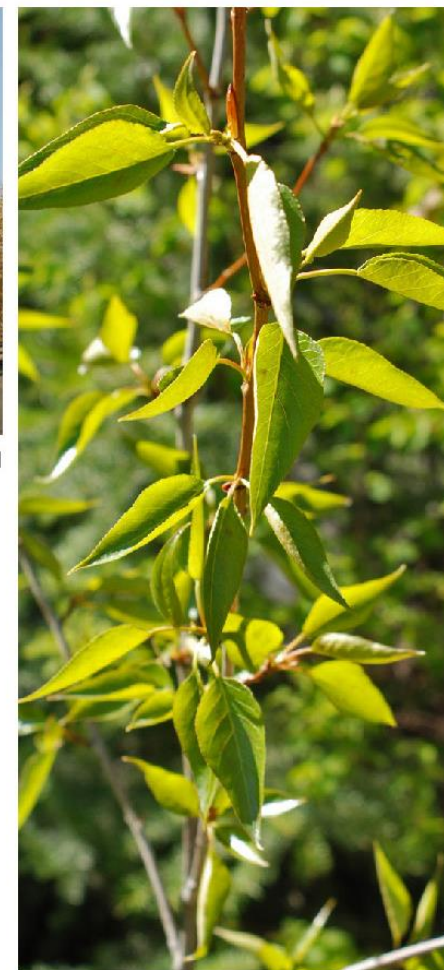
CANOPY TREES



Narrowleaf Cottonwood



Aspen



SHRUBS



'Isanti' red twig dogwood



Grow-low sumac



Mops Mugo Pine



Peking Cottoneaster



Snowberry



Elderberry



Woods Rose

PERENNIALS/ ORNAMENTAL GRASSES



Yarrow



May Night Salvia



Penstemon varieties



Black eyed susan



Gayfeather



Catmint



Blonde ambition
blue gamma grass



Blue oat grass

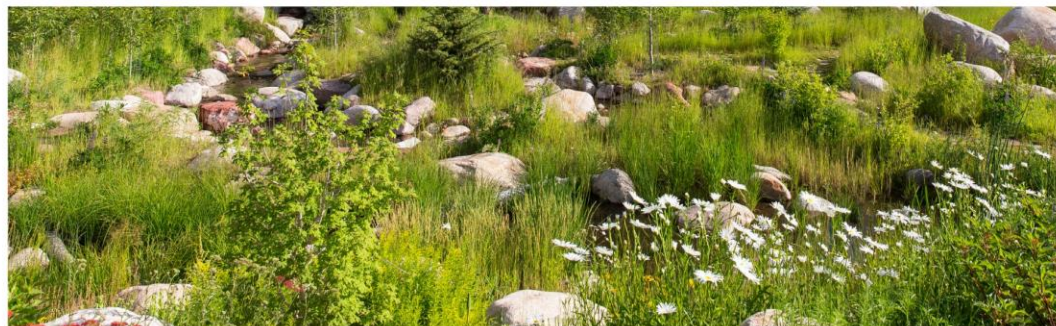


Heavy metal switch
grass

GRASSES



Lawn and native grass sweeping edges



ILLUSTRATIVE VISUALIZATIONS





- Restroom centered on plaza
- Raised planting
- Vertical board formed concrete retaining walls and cheek walls
- Broom finished concrete stairs
- Snowmelted concrete unit plaza
- Access ramp
- Raised planting
- Vertical board formed concrete retaining walls and cheek walls
- Broom finished concrete stairs

A stylized graphic of a green leaf, composed of several triangular and quadrilateral segments separated by white lines, positioned on the left side of the slide.

LIFT ONE CORRIDOR

Parks and Open Space
Improvements





Dean Street

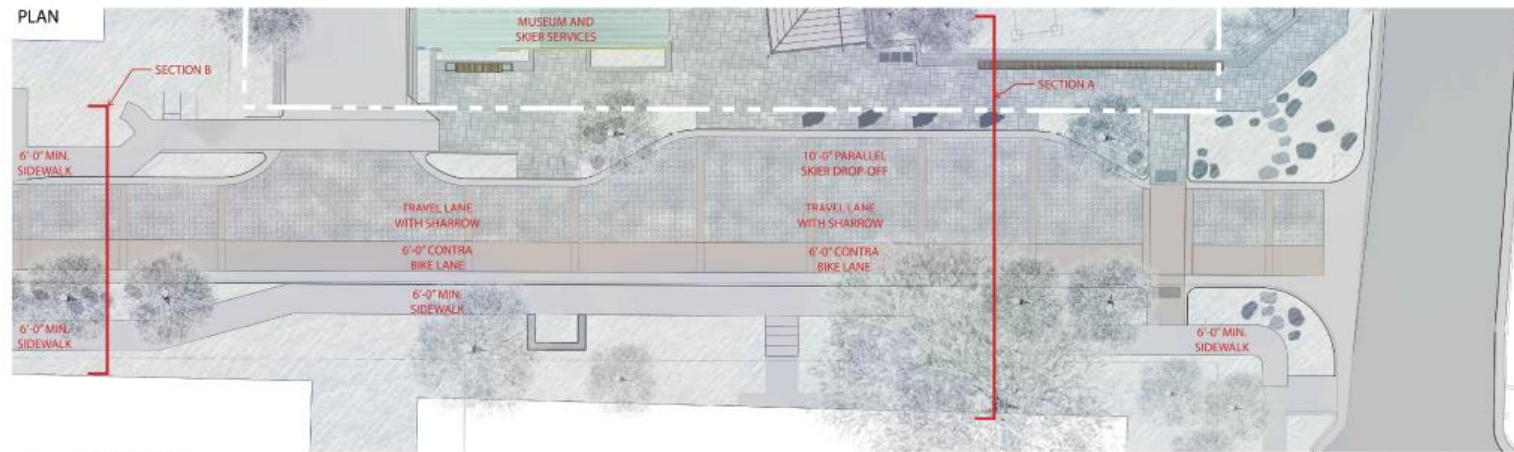
Gilbert Street

South Aspen Street

SCALE: 1"=20'

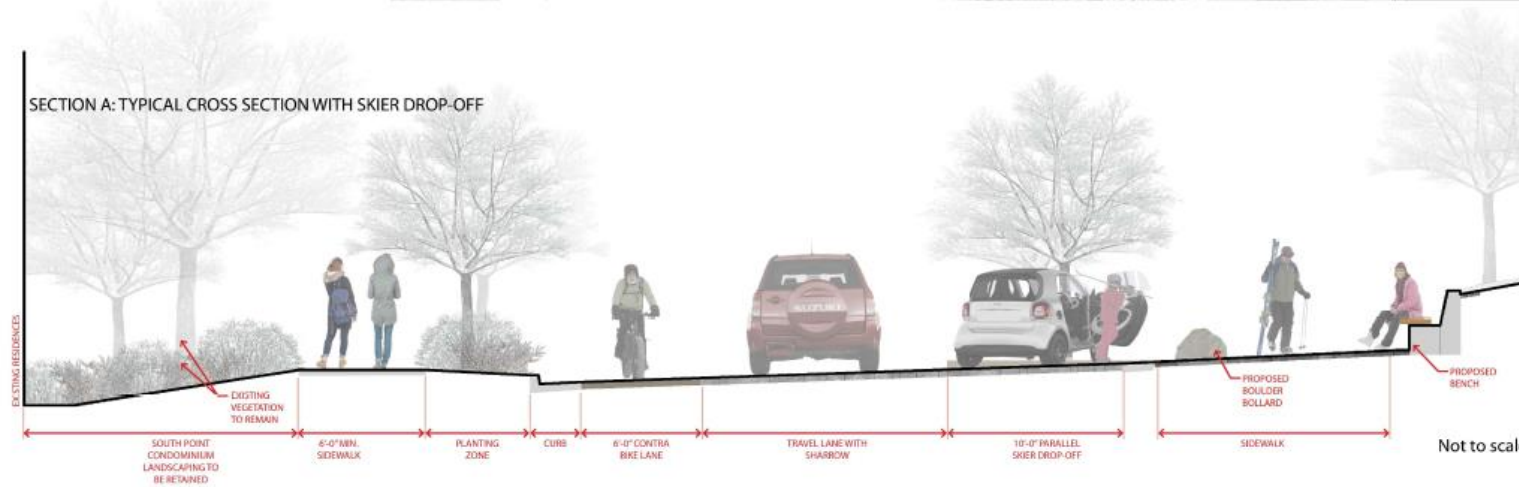


PLAN



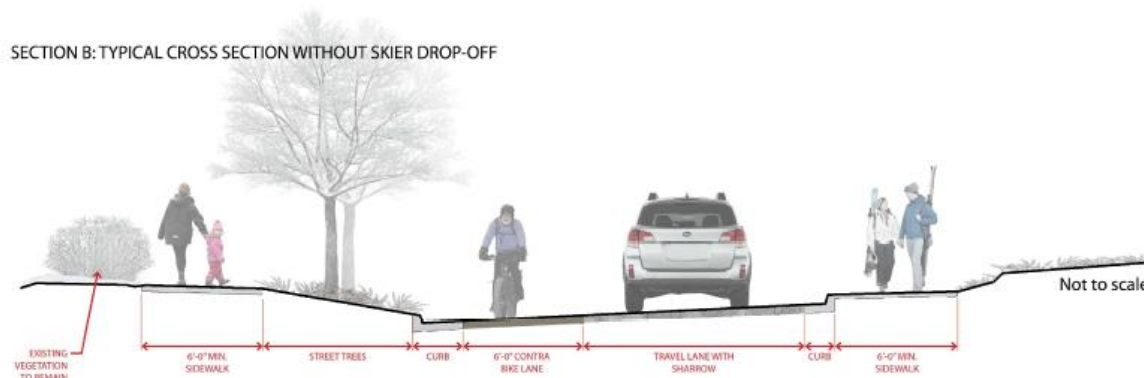
Not to scale

SECTION A: TYPICAL CROSS SECTION WITH SKIER DROP-OFF



Not to scale

SECTION B: TYPICAL CROSS SECTION WITHOUT SKIER DROP-OFF



Not to scale













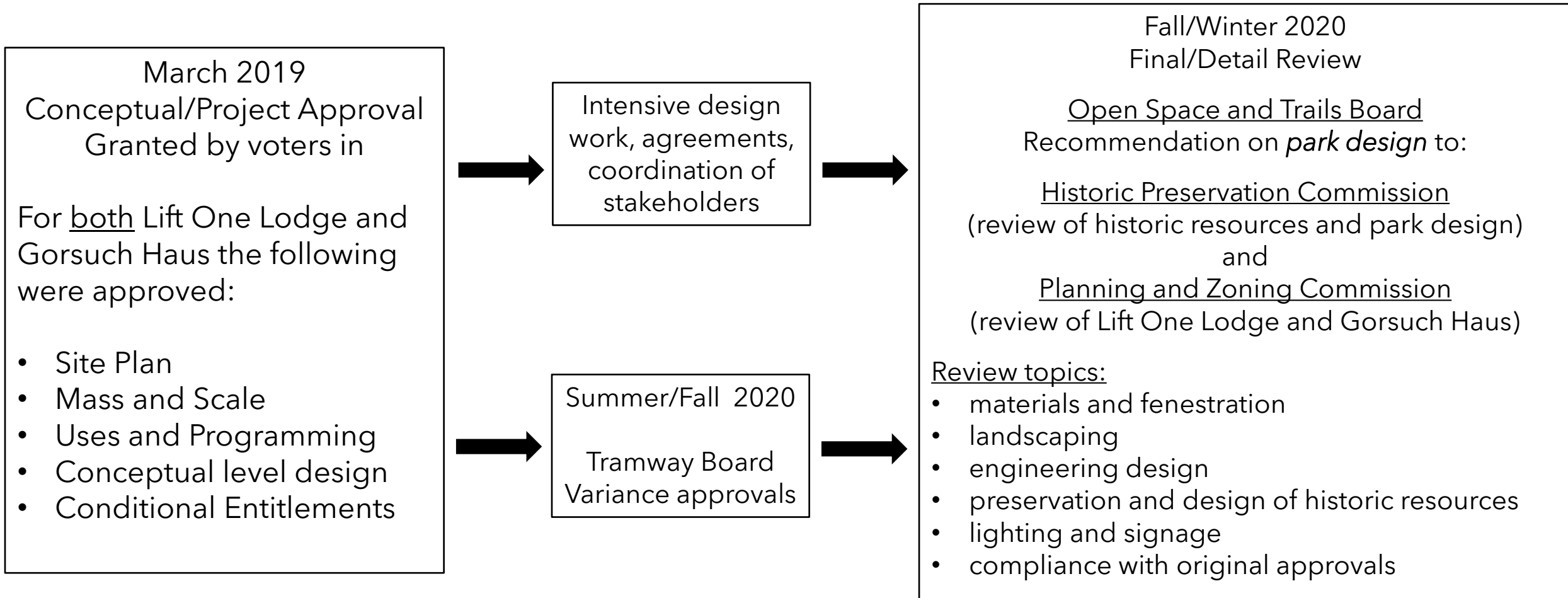








Lift One Corridor – The Review Process



Questions and Answers